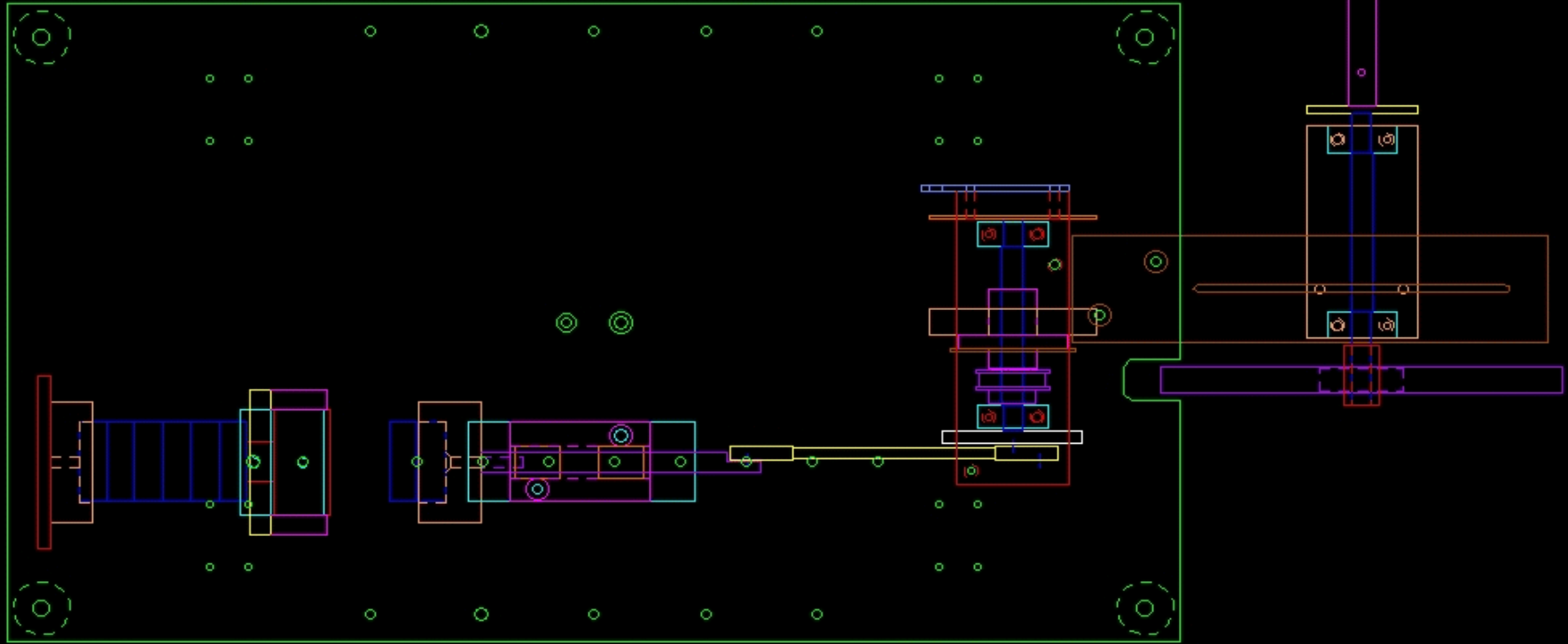


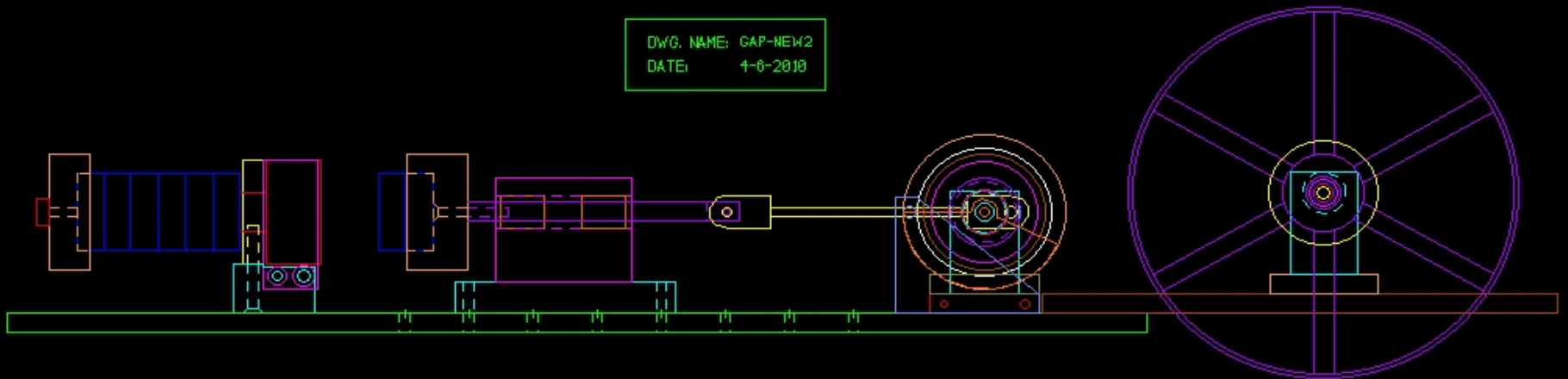
Gap Power

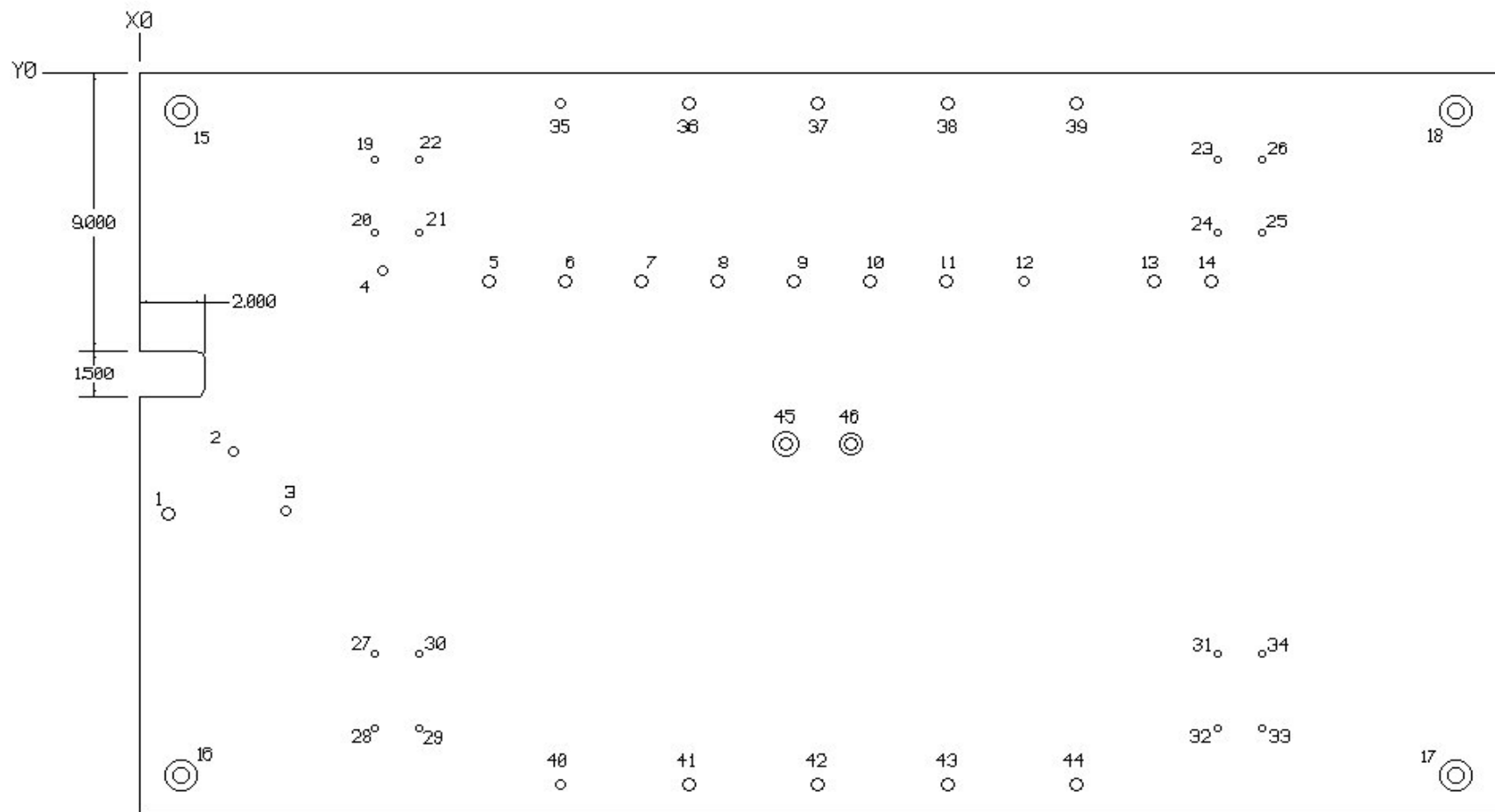
Drawings for One Cylinder Linear Version

Concept

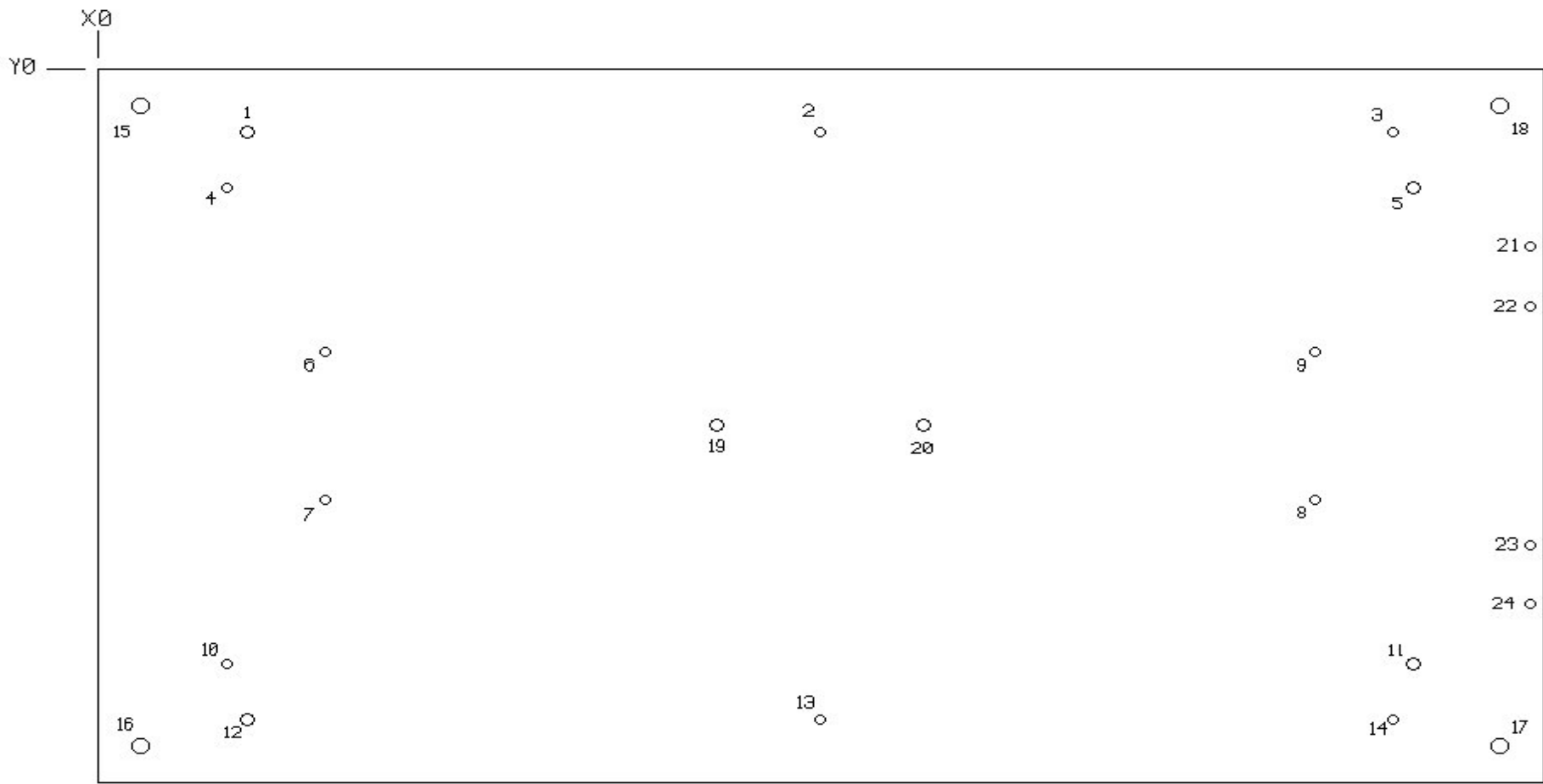


DWG. NAME: GAP-NEW2
DATE: 4-6-2010





POINTS	X	Y		POINTS	X	Y		POINTS	X	Y	
1	.875	-14.282	3/8"-16 NC TAPPED THRU HOLE	19	7.260	-2.819	1/4"-20 NC TAPPED THRU HOLE	35	13.000	-10.000	3/8"-16 NC TAPPED THRU HOLE
2	2.875	-12.282		20	7.260	-5.181		36	17.000	-10.000	
3	4.500	-14.175		21	8.638	-5.181		37	21.000	-10.000	
4	7.500	-8.425		22	8.638	-2.819		38	25.000	-10.000	
5	10.815	-6.750	3/8" DIA. THRU HOLE	23	33.362	-2.819	39	29.000	-10.000	3/8"-16 NC TAPPED THRU HOLE	
6	13.177	-6.750		24	33.362	-5.181	40	13.000	-23.000		
7	15.539	-6.750		25	34.740	-5.181	41	17.000	-23.000		
8	17.901	-6.750		26	34.740	-2.819	42	21.000	-23.000		
9	20.263	-6.750	3/8" DIA. THRU HOLE, C'SUNK FROM TOP SIDE AS SHOWN FOR FLAT HEAD CAP SCREW	27	7.260	-18.819	43	25.000	-23.000	3/8" DIA. THRU HOLE, C'SUNK FROM TOP SIDE AS SHOWN FOR FLAT HEAD CAP SCREW	
10	22.625	-6.750		28	7.260	-21.181	44	29.000	-23.000		
11	24.987	-6.750		29	8.638	-21.181	45	20.000	-12.000		
12	27.349	-6.750		30	8.638	-18.819	46	22.000	-12.000		
13	31.413	-6.750	1/2" DIA. THRU HOLE, C'SUNK FROM TOP SIDE AS SHOWN FOR FLAT HEAD CAP SCREW	31	33.362	-18.819	<div style="border: 1px solid black; padding: 5px;"> PART NO: GAP-001 MATERIAL: 24" X 42" X 3/4" THICK 6061 T8 ALUMINUM PLATE QUANTITY: 1 PIECE GAP POWER ART PORTER </div>				
14	33.163	-6.750		32	33.362	-21.181					
15	1.250	-1.250		33	34.740	-21.181					
16	1.250	-22.750		34	34.740	-18.819					



PART NO: GAP-002
 MATERIAL: 24" X 42" X 1/2" THICK
 6061 T6 ALUMINUM PLATE
 QUANTITY: 1 PIECE

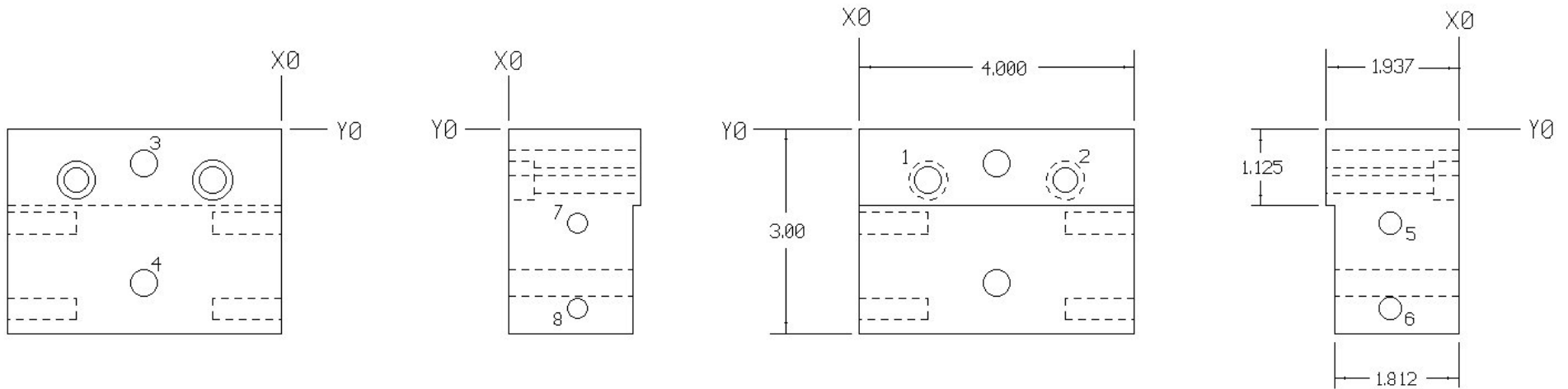
 GAP POWER
 ART PORTER

POINTS	X	Y
1	4.375	-2.125
2	21.000	-2.125
3	37.625	-2.125
4	3.750	-4.000
5	38.250	-4.000
6	6.625	-9.500
7	6.625	-14.500
8	35.375	-14.500
9	35.375	-9.500
10	3.750	-20.000
11	38.250	-20.000
12	4.375	-21.875
13	21.000	-21.875
14	37.625	-21.875
15	1.250	-1.250
16	1.250	-22.750
17	40.750	-22.750
18	40.750	-1.250

POINTS	X	Y	
19	18.000	-12.000	3/8" DIA. THRU HOLE
20	24.000	-12.000	
21	41.625	-6.000	1/4" DIA. THRU HOLE
22	41.625	-8.000	
23	41.625	-16.000	
24	41.625	-18.000	

5/16"-18 NC TAPPED
 THRU HOLE

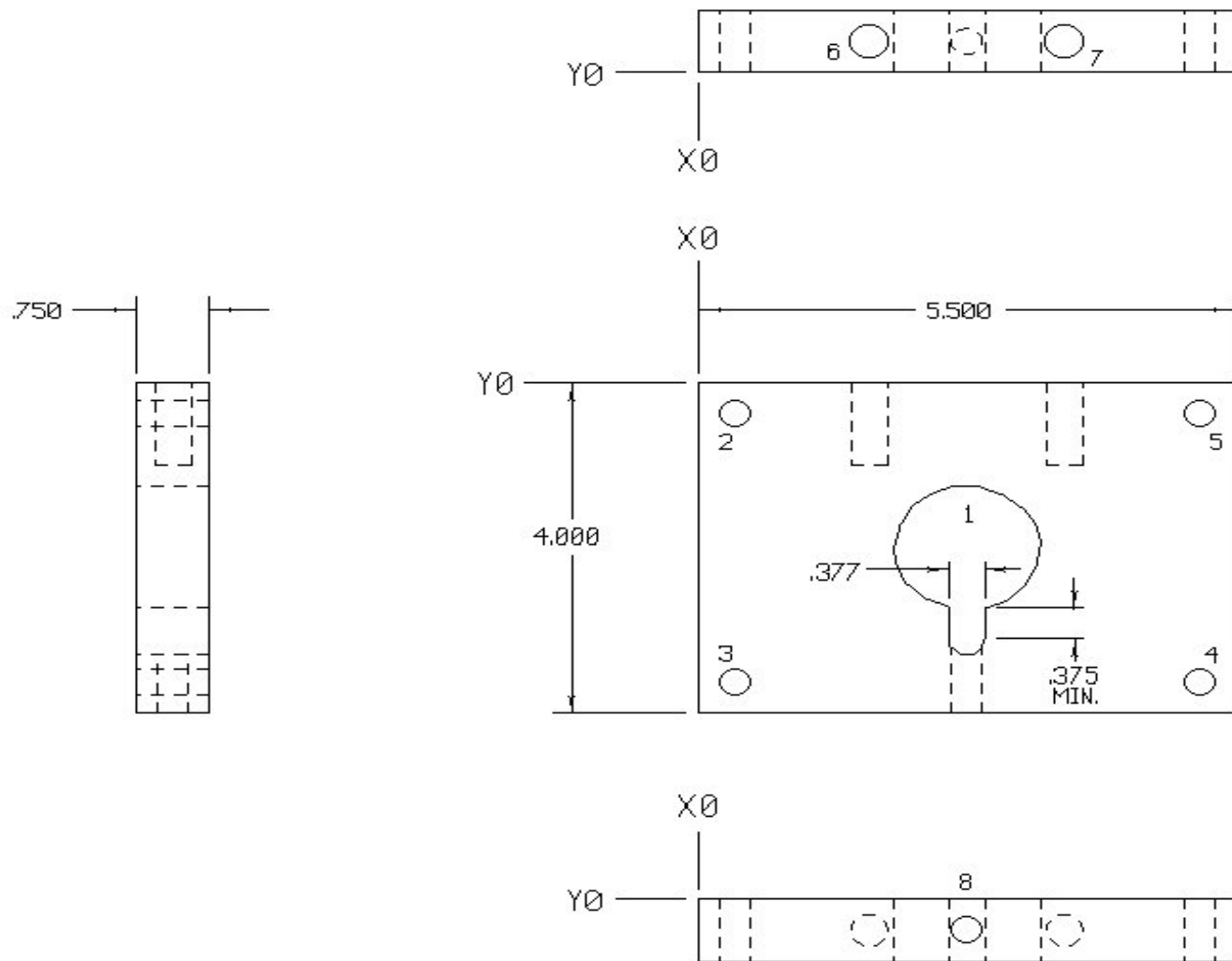
1/2" DIA. THRU HOLE



HOLES	X	Y	DESCRIPTION
1	1.000	-0.750	3/8" DIA. THRU HOLE, C'SUNK AS
2	3.000	-0.750	SHOWN FOR FLAT HEAD SCREW
3	-2.000	-0.500	3/8"-16 NC TAPPED HOLE, 5/8" MIN
4	-2.000	-2.250	STRAIGHT THREAD DEPTH
5	-1.000	-1.375	
6	-1.000	-2.625	5/16"-18 NC TAPPED HOLE, 1/2" MIN
7	1.000	-1.375	STRAIGHT THREAD DEPTH
8	1.000	-2.625	

PART NO: GAP-003
 MATERIAL: 6061 T6 ALUMINUM
 QUANTITY: 1 PIECE

 GAP POWER
 ART PORTER



HOLE#	X	Y	DESCRIPTION
1	2.750	-2.000	1.501" DIA. THRU HOLE
2	.375	-.375	5/16"-18 NC TAPPED THRU HOLE
3	.375	-3.625	
4	5.125	-3.625	
5	5.125	-.375	
6	1.750	.375	3/8"-16 NC TAPPED HOLE, 5/8" MIN
7	3.750	.375	STRAIGHT THREAD DEPTH
8	2.750	-.375	5/16"-18 NC TAPPED THRU HOLE

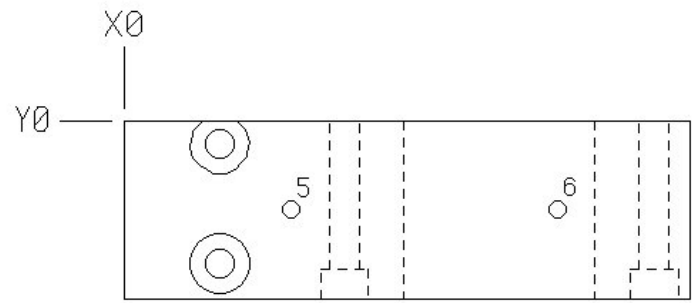
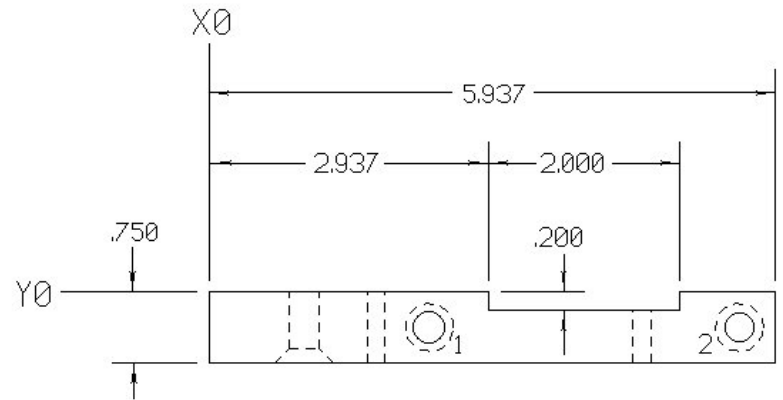
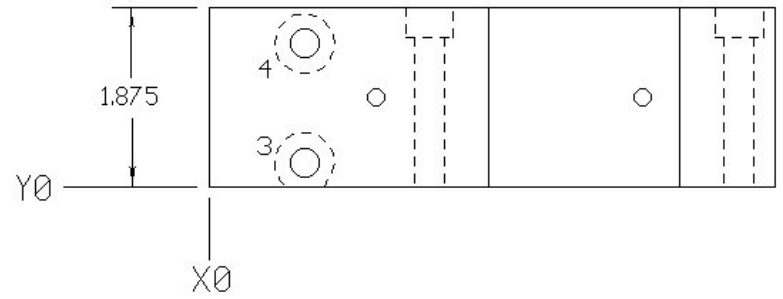
PART NO: GAP-004
MATERIAL: 6061 T6 ALUMINUM
QUANTITY: 1 PIECE

GAP POWER
ART PORTER

HOLES	X	Y	DESCRIPTION
1	2.312	-.375	5/16" DIA. THRU HOLE, C'BORED .800" DEEP FROM OTHER
2	5.562	-.375	SIDE AS SHOWN FOR SOCKET HEAD CAP SCREW
3	1.000	.250	5/16" DIA. THRU HOLE, C'SUNK FROM OTHER
4	1.000	1.500	SIDE AS SHOWN FOR FLAT HEAD SCREW
5	1.750	-.937	#10-32 NF TAPPED THRU HOLE
6	4.540	-.937	

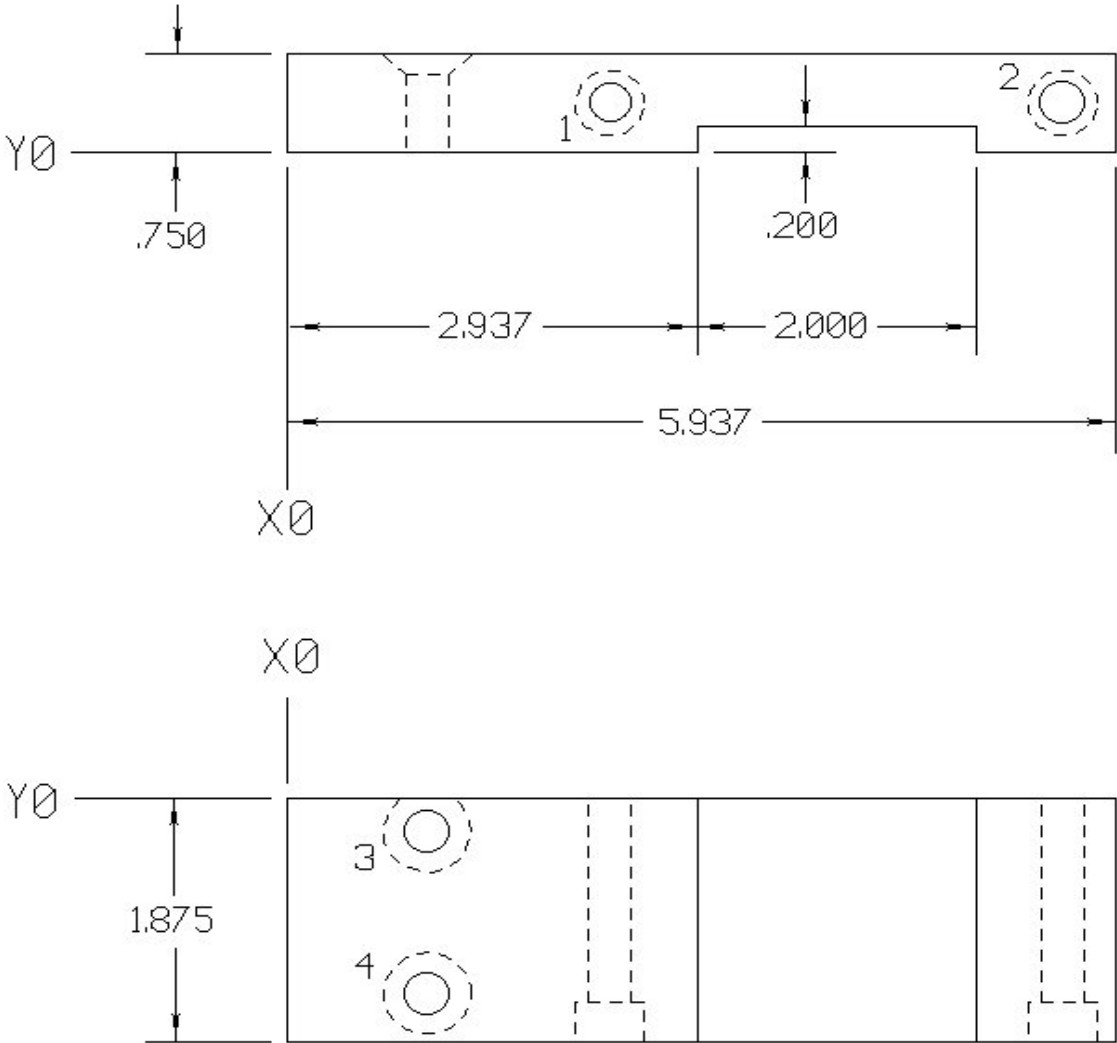
PART NO: GAP-005
MATERIAL: 6061 T6 ALUMINUM
QUANTITY: 1 PIECE

GAP POWER
ART PORTER

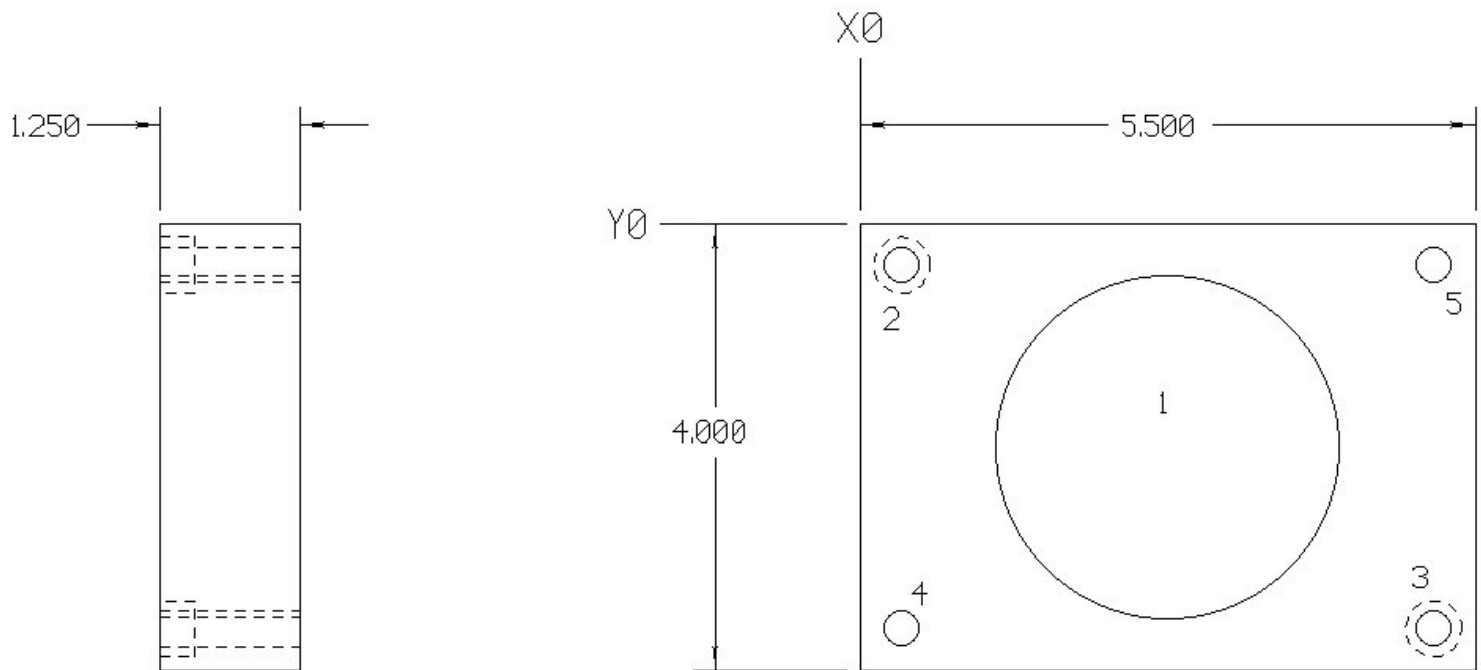


PART NO: GAP-006
 MATERIAL: 6061 T6 ALUMINUM
 QUANTITY: 1 PIECE

GAP POWER
 ART PORTER



HOLES	X	Y	DESCRIPTION
1	2.312	.375	5/16" DIA. THRU HOLE, C'BORED .800" DEEP FROM OTHER
2	5.562	.375	SIDE AS SHOWN FOR SOCKET HEAD CAP SCREW
3	1.000	-.250	5/16" DIA. THRU HOLE, C'SUNK FROM OTHER
4	1.000	-1.500	SIDE AS SHOWN FOR FLAT HEAD SCREW



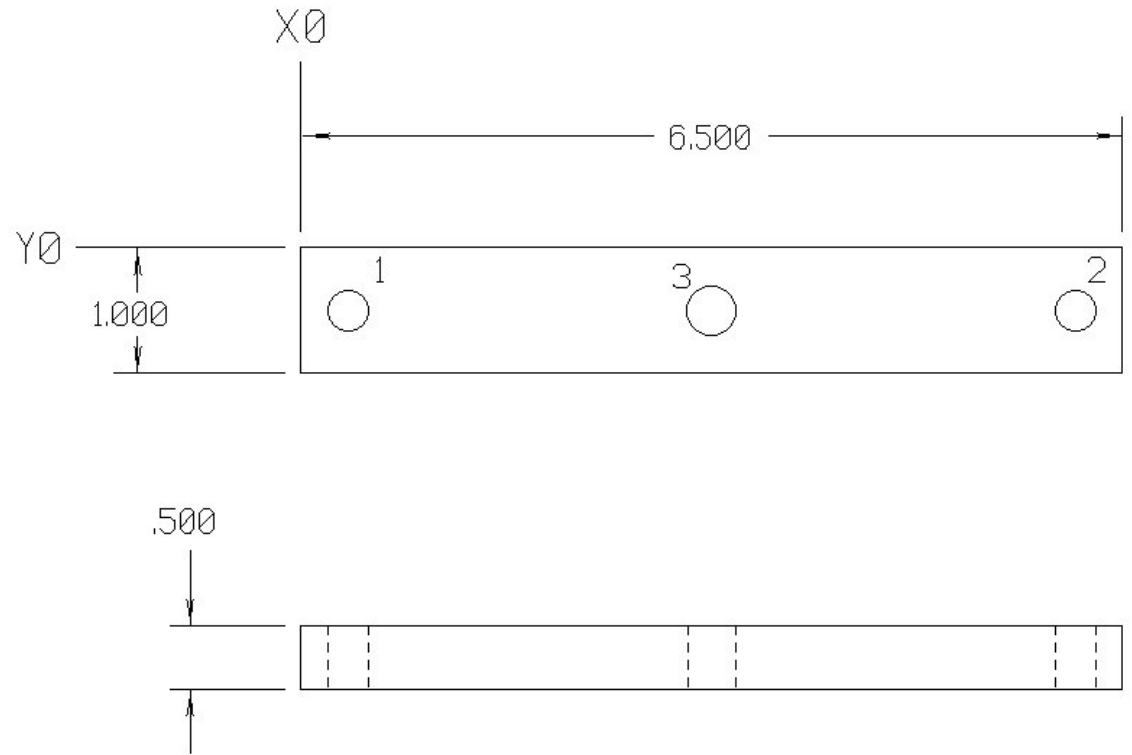
HOLES	X	Y	DESCRIPTION
1	2.750	-2.000	3.050" DIA. THRU HOLE
2	.375	-.375	5/16" DIA. THRU HOLE, C'BORED AS SHOWN TO
3	5.125	-3.625	DEPTH OF .312" FOR SOCKET HEAD CAP SCREW
4	.375	-3.625	
5	5.125	-.375	5/16"-18 NC TAPPED THRU HOLE

PART NO: GAP-007
MATERIAL: 6061 T6 ALUMINUM
QUANTITY: 1 PIECE

GAP POWER
ART PORTER

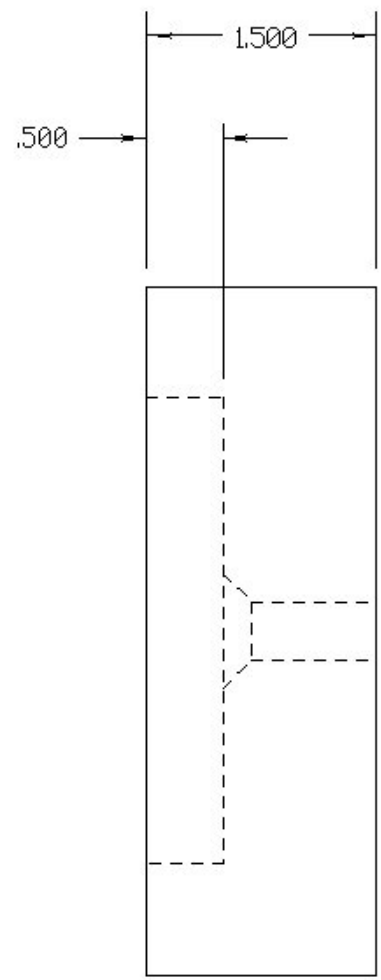
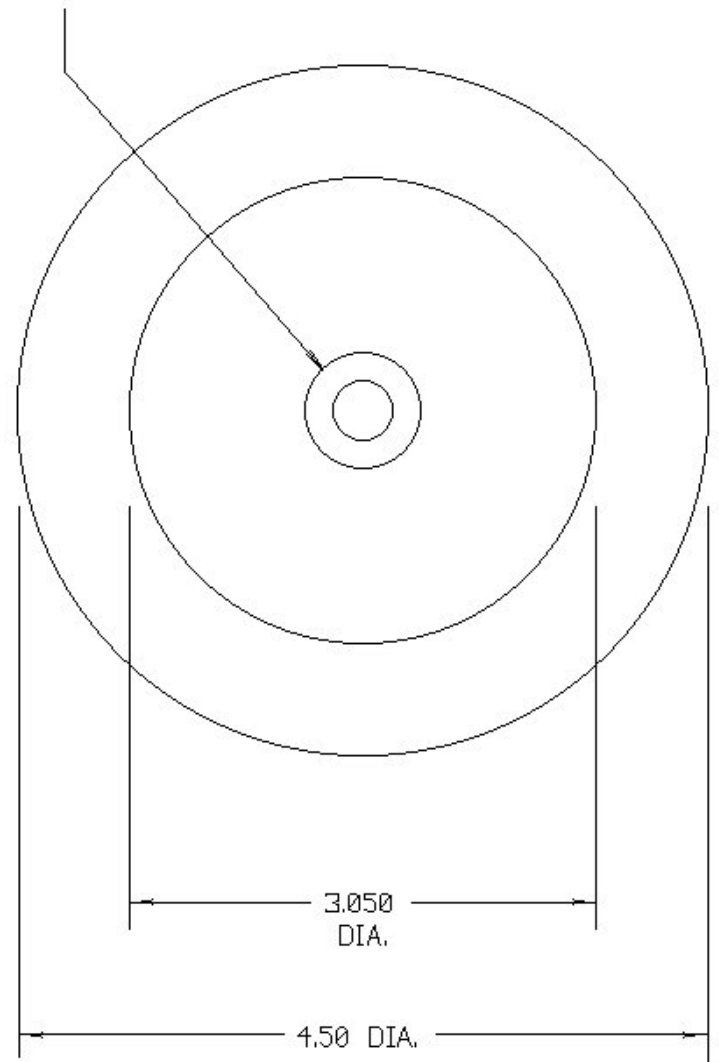
PART NO: GAP-008
 MATERIAL: 6061 T6 ALUMINUM
 QUANTITY: 1 PIECE

GAP POWER
 ART PORTER



HOLE#	X	Y	DESCRIPTION
1	.375	-.500	5/16" DIA. THRU HOLE
2	6.130	-.500	
3	3.250	-.500	3/8"-16 NC TAPPED THRU HOLE

3/8" DIA. THRU HOLE,
C'SUNK FOR FLAT HEAD
CAP SCREW

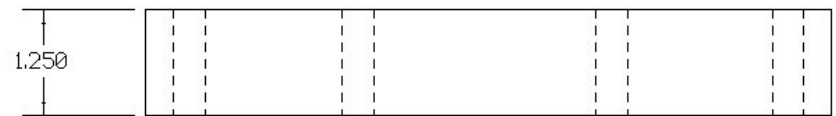
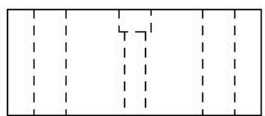
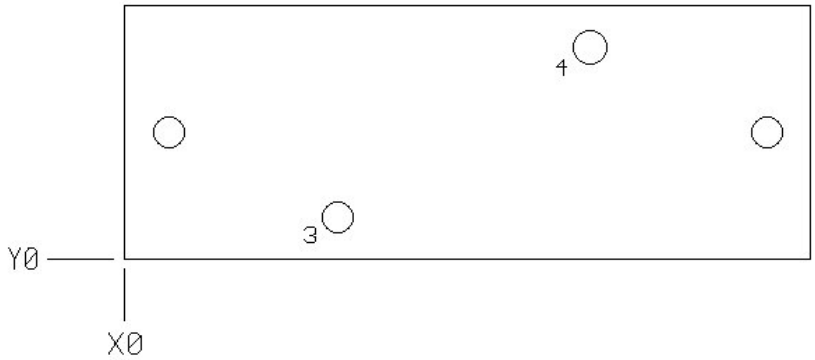


PART NO: GAP-009
MATERIAL: 6061 T6 ALUMINUM
QUANTITY: 1 PIECE

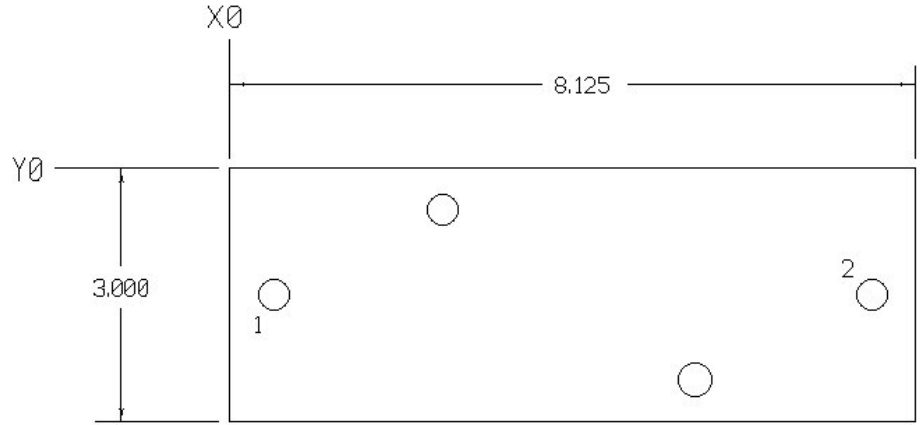
GAP POWER
ART PORTER

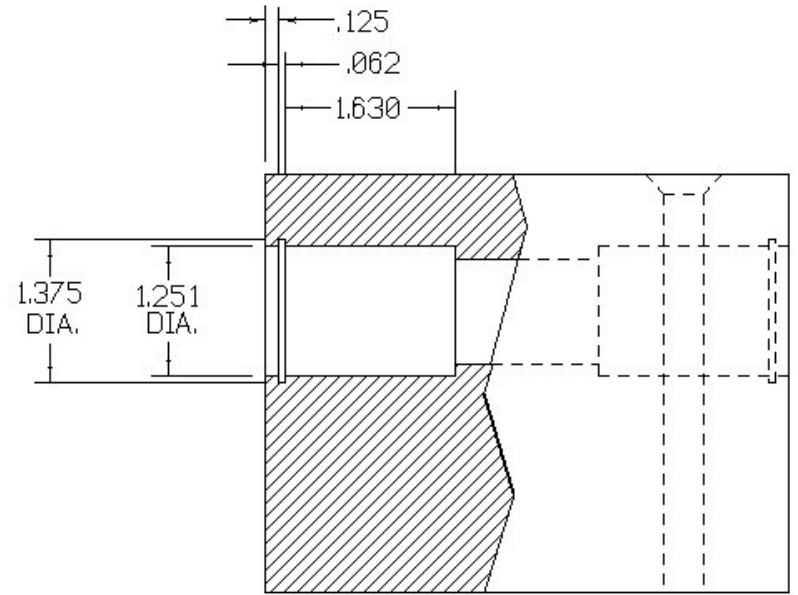
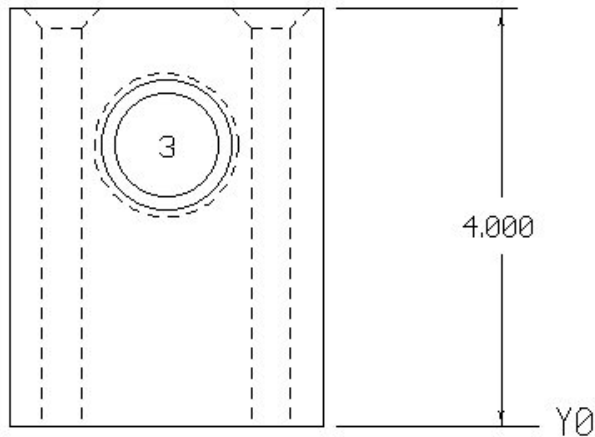
PART NO: GAP-010
 MATERIAL: 6061 T6 ALUMINUM
 QUANTITY: 1 PIECE

GAP POWER
 ART PORTER



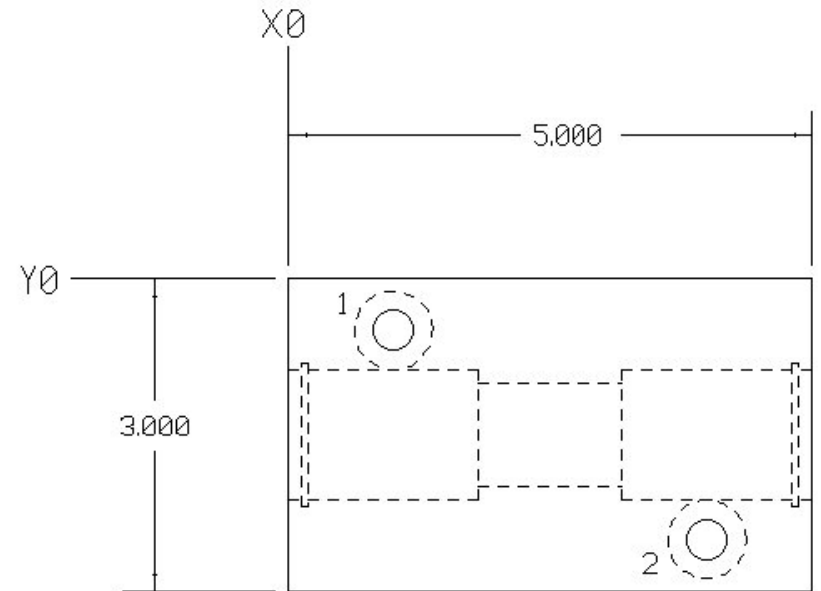
HOLE	X	Y	DESCRIPTION
1	.520	-1.500	3/8"-16 NC TAPPED THRU HOLE, CENTERED AND TAPPED FROM SIDE SHOWN
2	7.606	-1.500	
3	2.520	.500	
4	5.520	2.500	





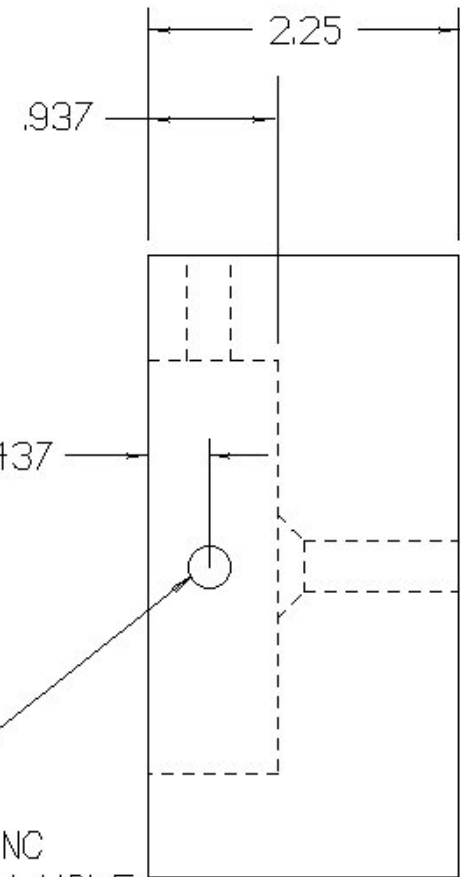
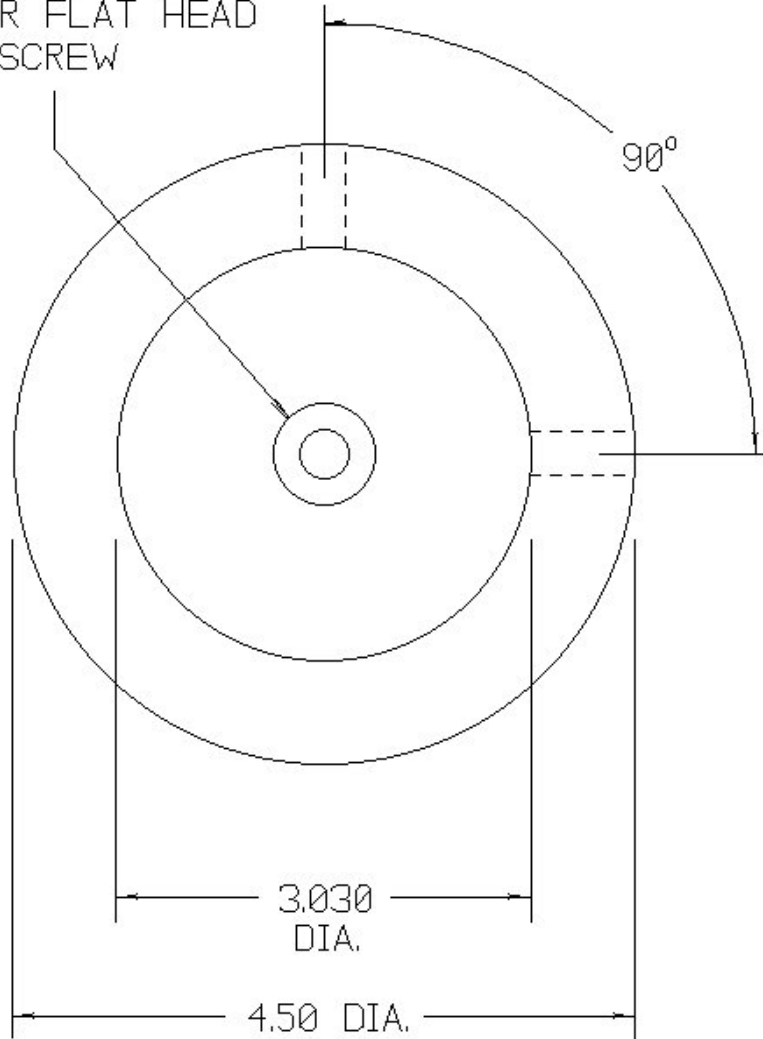
PART NO: GAP-011
 MATERIAL: 6061 T6 ALUMINUM
 QUANTITY: 1 PIECE

GAP POWER
 ART PORTER



HOLE	X	Y	DESCRIPTION
1	1.000	-.500	3/8" DIA. THRU HOLE, C'SUNK AS
2	4.000	-2.500	SHOWN FOR FLAT HEAD SCREW
3	-1.500	2.687	1.000" DIA. THRU HOLE, BORED AS SHOWN FOR SLIP FIT OF STAR BEARING #0750-112-00 AND SNAP RING ON BOTH ENDS

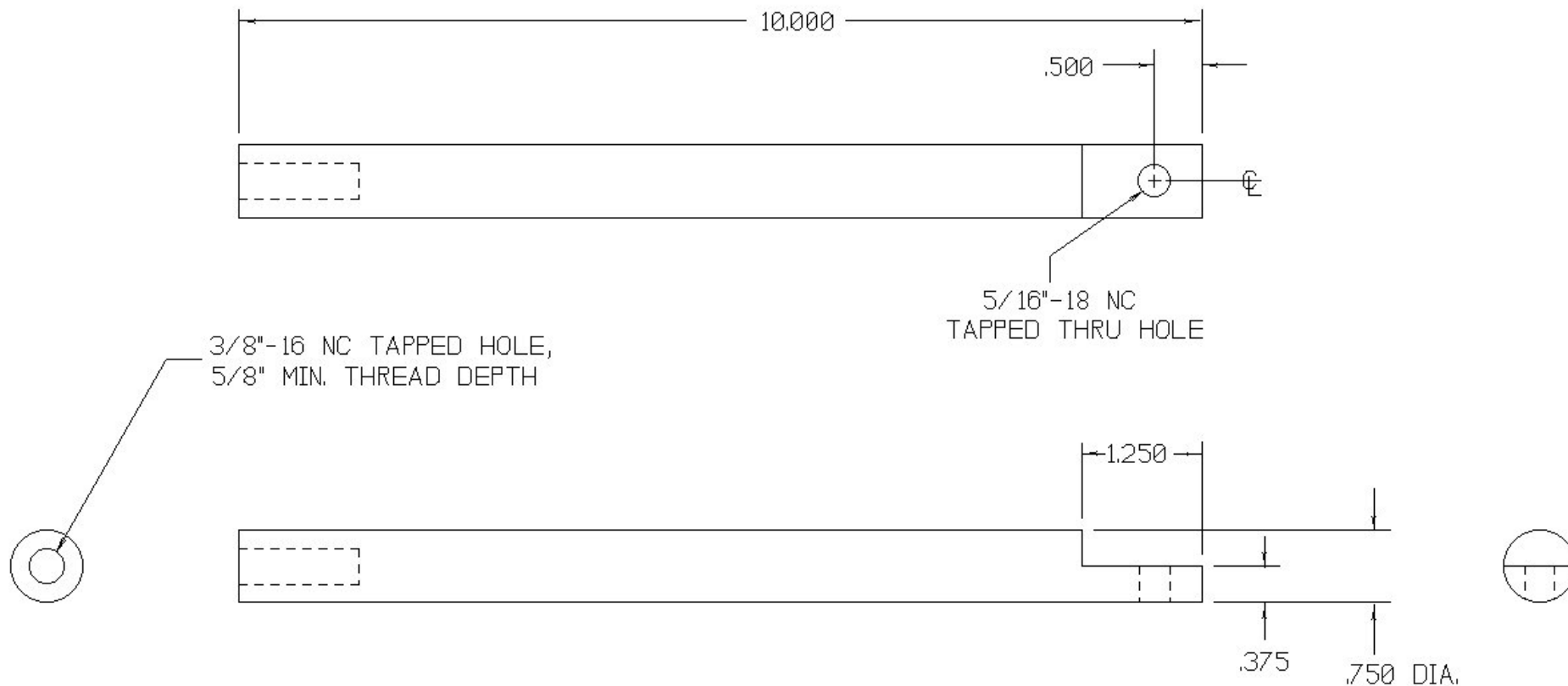
3/8" DIA. THRU HOLE,
C'SUNK FOR FLAT HEAD
CAP SCREW



5/16"-18 NC
TAPPED THRU HOLE
(TYP. 2)

PART NO: GAP-012
MATERIAL: 6061 T6 ALUMINUM
QUANTITY: 1 PIECE

GAP POWER
ART PORTER



GAP POWER
ART PORTER

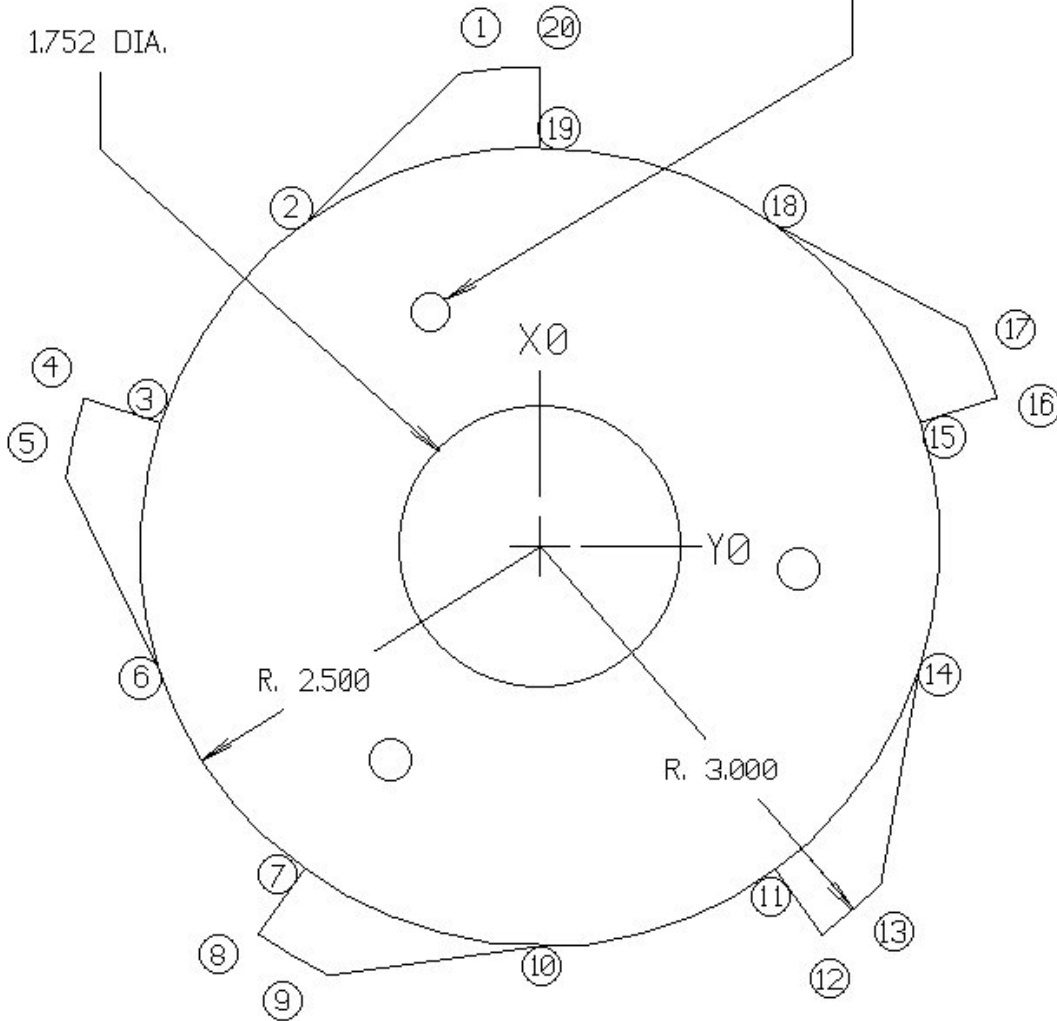
PART NO: GAP-013
 QUANTITY: 1 PIECE
 MATERIAL: 3/4" DIA. O-1 TOOL STEEL,
 HEAT-TREATED AND POLISHED
 FOR SLIP FIT IN STAR
 0750-112-00 LINEAR BEARINGS

PART NO: GAP-014
 MATERIAL: COLD ROLL STEEL
 QUANTITY: 1 PIECE

GAP POWER
 ART PORTER

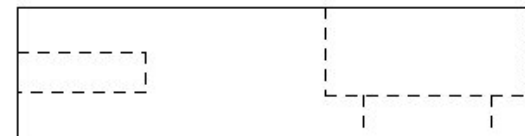
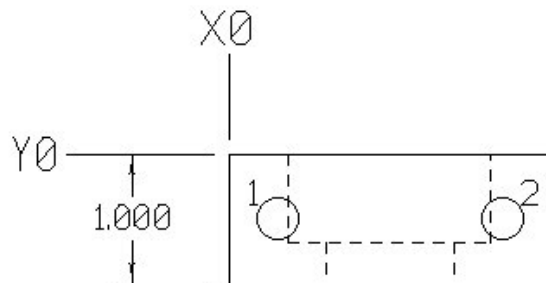
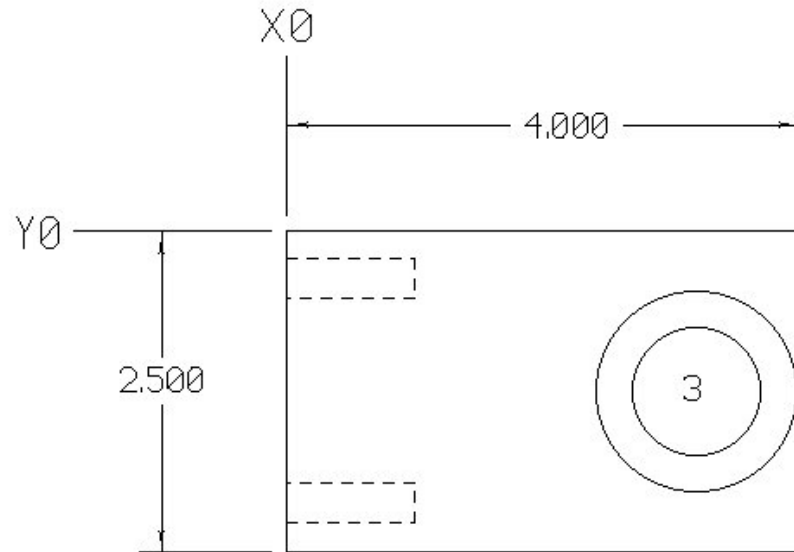
(3) 1/4" DIA. THRU HOLES,
 3.250" DIA. BOLT CIRCLE

POINTS	X	Y
1	-.3726	3.2500
2	-1.5500	2.1185
3	-2.4551	.9291
4	-3.0523	1.1232
5	-3.2061	.6500
6	-2.4938	-.8194
7	-1.6423	-2.0478
8	-2.0114	-2.5558
9	-1.6089	-2.8483
10	.0087	-2.6250
11	1.4401	-2.1947
12	1.8092	-2.7028
13	2.2117	-2.4103
14	2.4992	-.8029
15	2.5323	.6914
16	3.1296	.8854
17	2.9758	1.3586
18	1.5359	2.1288
19	.1250	2.6220
20	.1250	3.2500



PART NO: GAP-015
 MATERIAL: 6061 T6 ALUMINUM
 QUANTITY: 2 PIECES

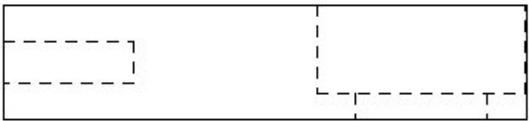
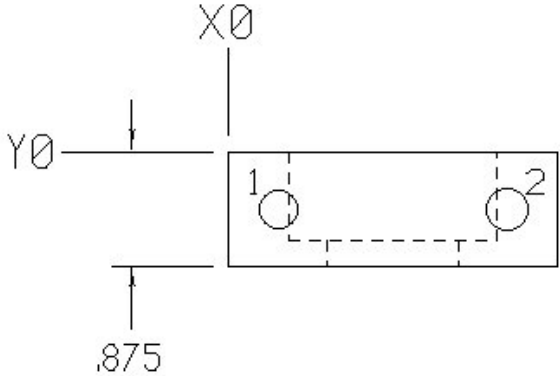
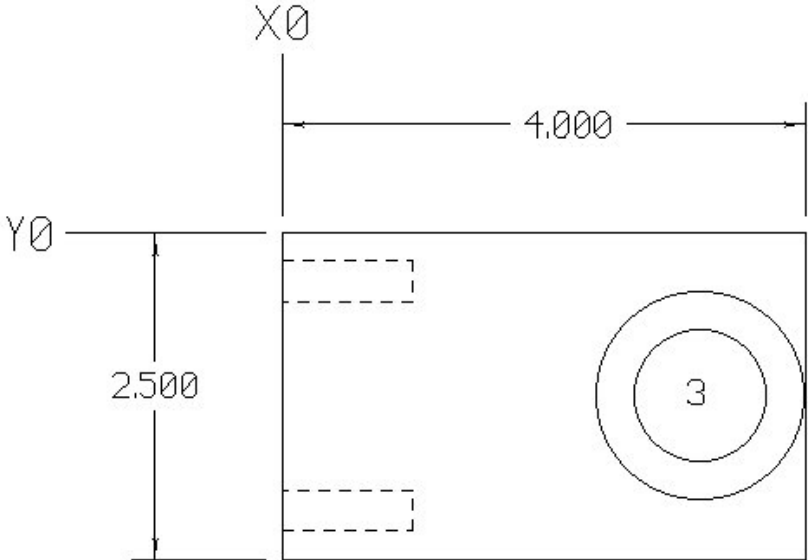
GAP POWER
 ART PORTER



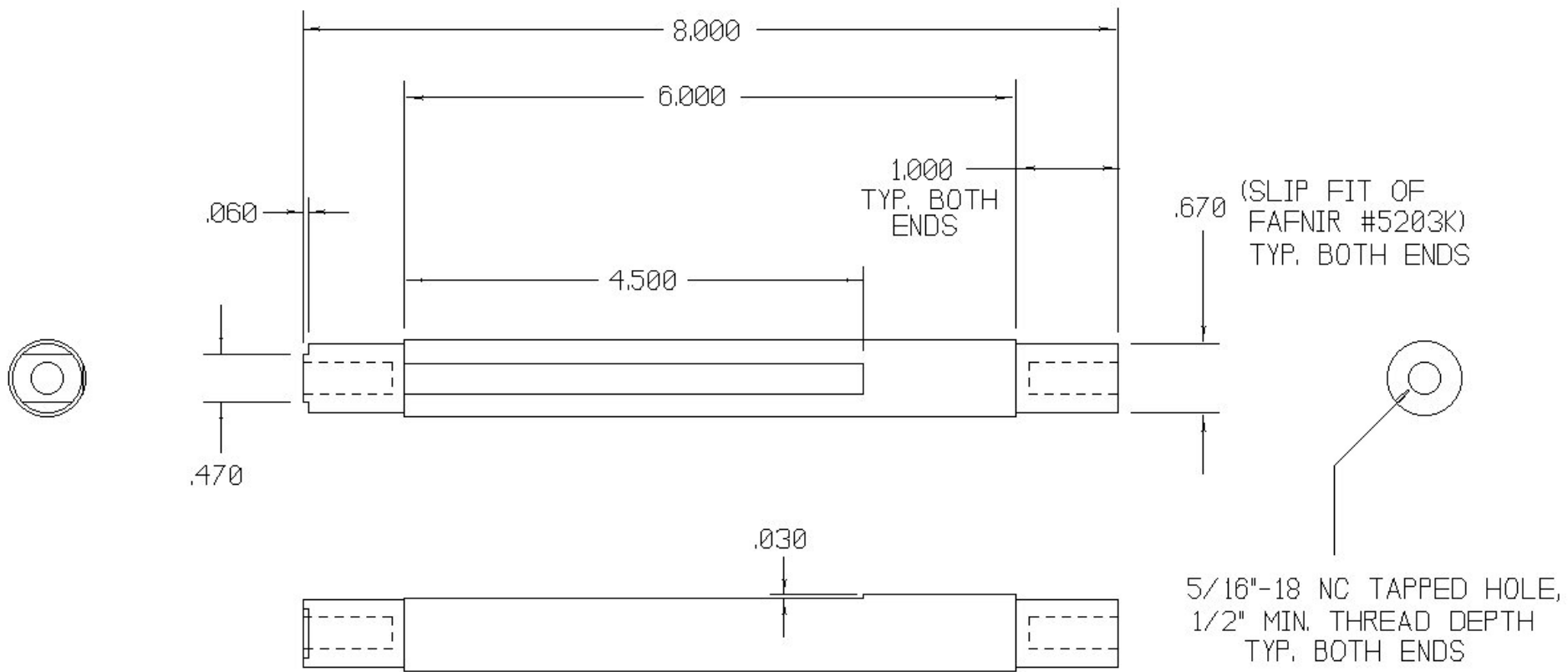
HOLE	X	Y	DESCRIPTION
1	.375	-.500	5/16"-18 NC TAPPED HOLE,
2	2.125	-.500	1/2" MIN. THREAD DEPTH
3	3.1875	-1.250	1.000" DIA. THRU HOLE, C'BORED AS SHOWN TO 1.575" DIA. FOR DEPTH OF .685" TO ALLOW SLIP FIT OF FAFNIR BEARING #5203K

PART NO: GAP-016
 MATERIAL: 6061 T6 ALUMINUM
 QUANTITY: 2 PIECES

GAP POWER
 ART PORTER



HOLE	X	Y	DESCRIPTION
1	.375	-.4375	5/16"-18 NC TAPPED HOLE, 1/2" MIN. THREAD DEPTH
2	2.125	-.4375	
3	3.1875	-1.250	1.000" DIA. THRU HOLE, C'BORED AS SHOWN TO 1.575" DIA. FOR DEPTH OF .685" TO ALLOW SLIP FIT OF FAFNIR BEARING #5203K

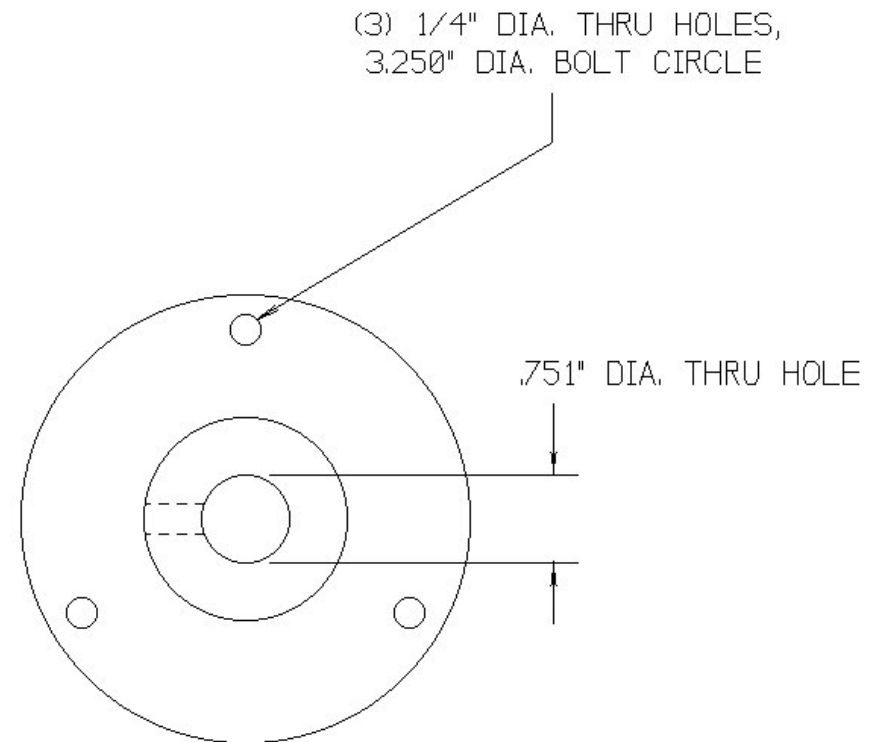
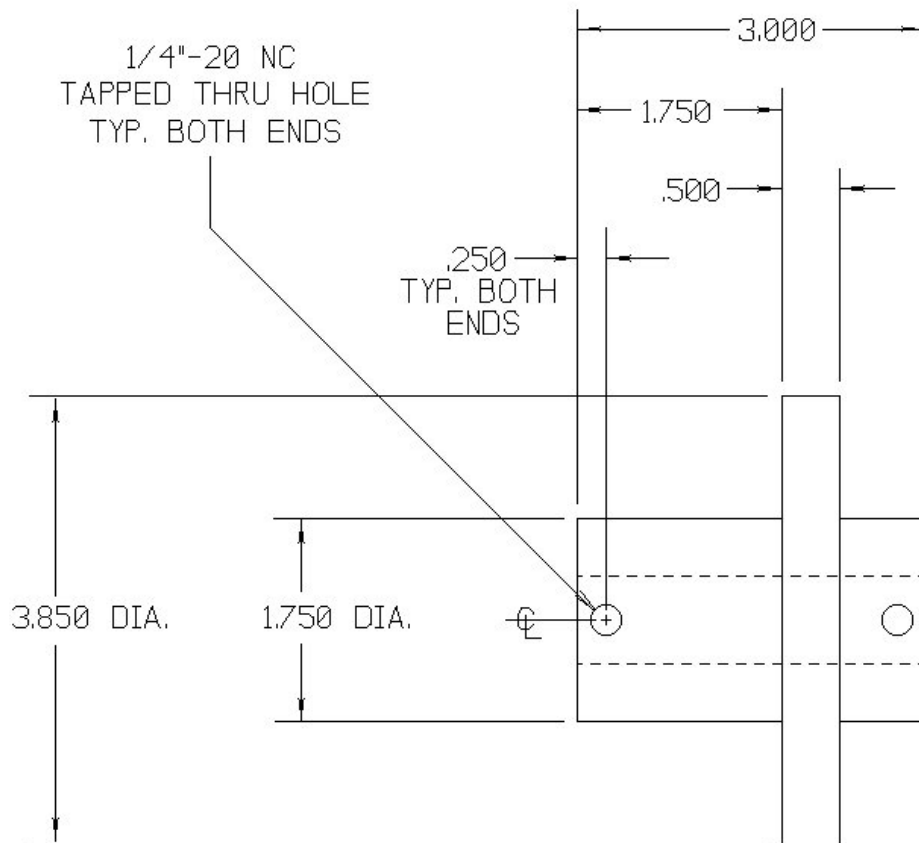


GAP POWER
ART PORTER

PART NO: GAP-017
 QUANTITY: 1 PIECE
 MATERIAL: 3/4" DIA. 0-1 TOOL STEEL, HEAT-TREATED, WITH ENDS
 POLISHED FOR SLIP FIT IN FAFNIR BEARING #5203K

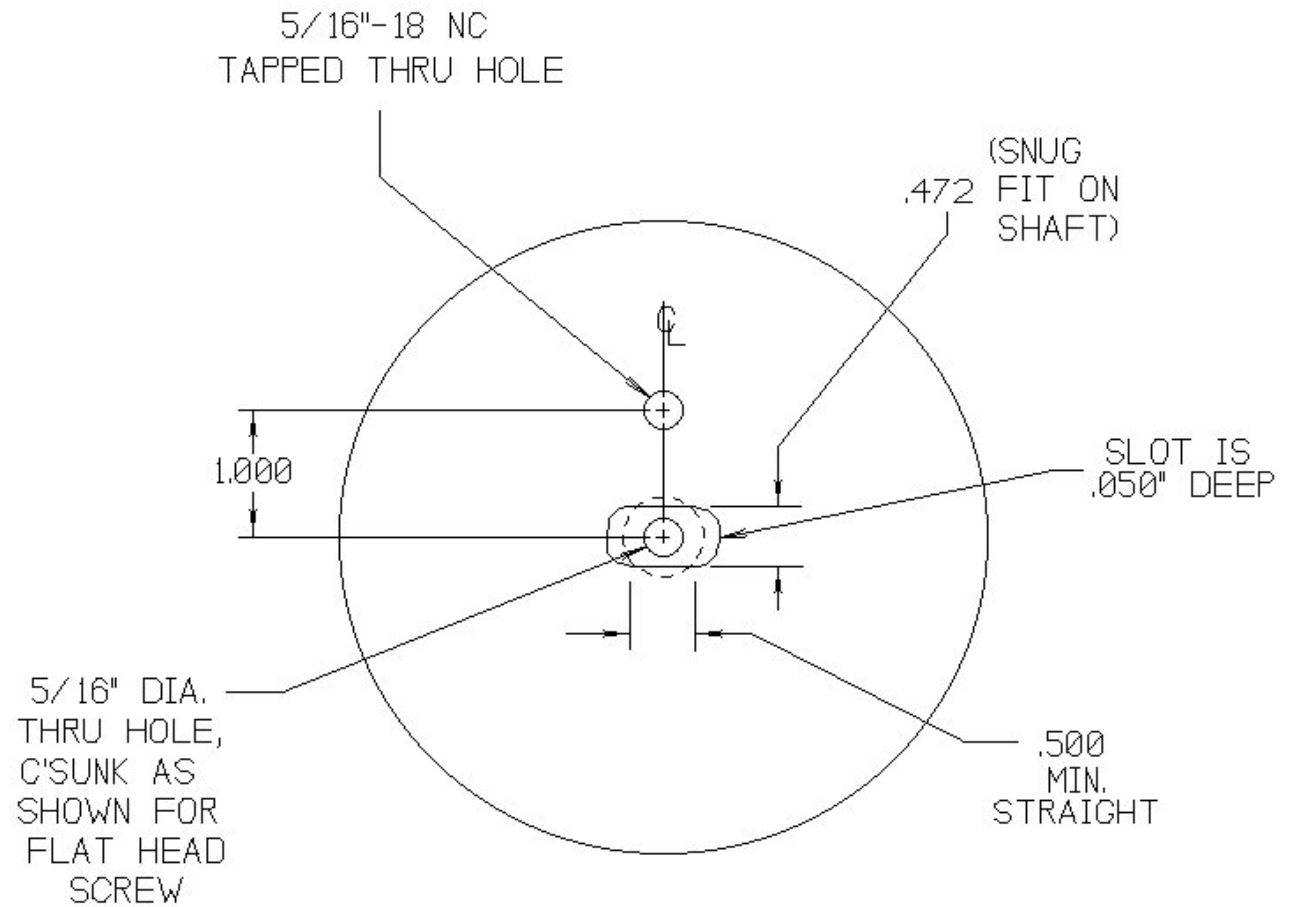
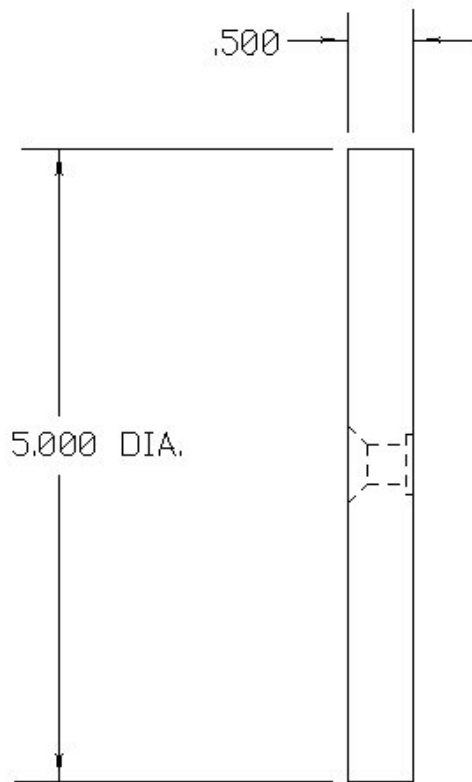
PART NO: GAP-018
MATERIAL: 6061 T6 ALUMINUM
QUANTITY: 1 PIECE

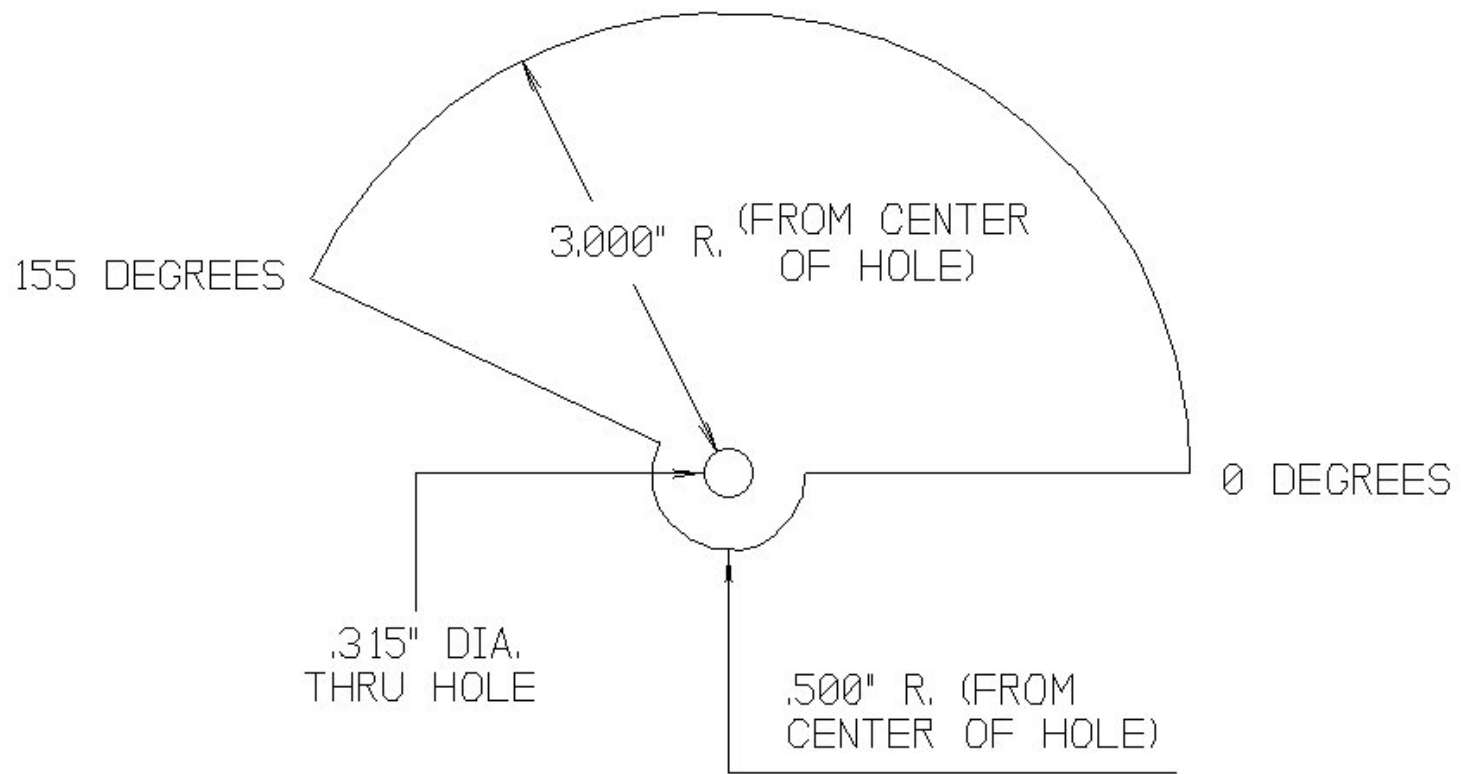
GAP POWER
ART PORTER



PART NO: GAP-019
MATERIAL: 6061 T6 ALUMINUM
QUANTITY: 1 PIECE

GAP POWER
ART PORTER





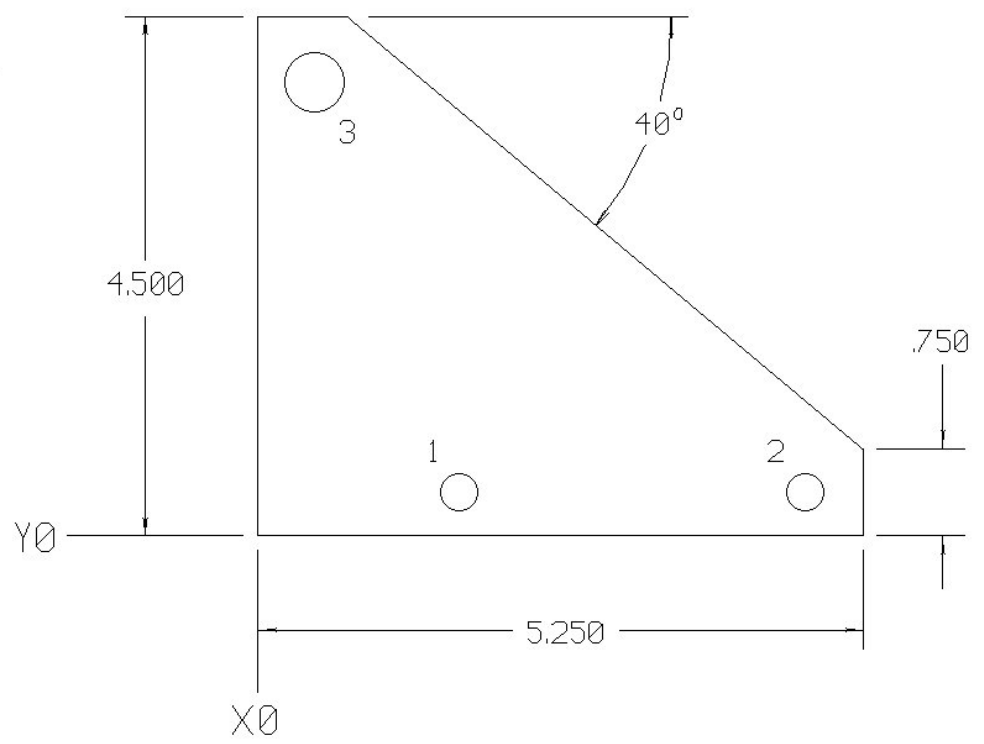
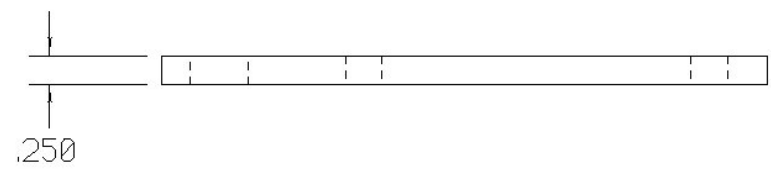
PART NO: GAP-020
MATERIAL: .110" THICK, (I THINK 12 GAGE)
HOT ROLL STEEL, LASER CUT
QUANTITY: 1 PIECE

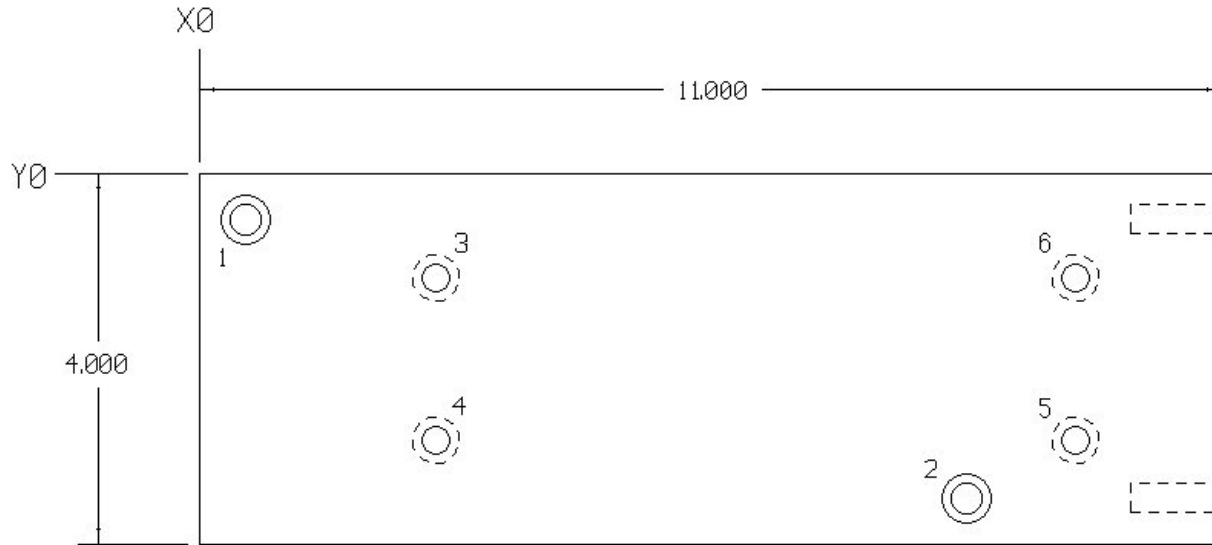
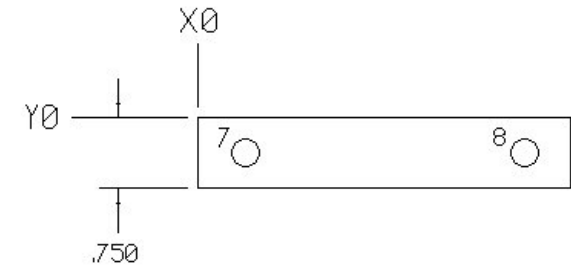
GAP POWER
ART PORTER

HOLE	X	Y	DESCRIPTION
1	1.750	.375	5/16" DIA. THRU HOLE
2	4.750	.375	
3	.500	3.937	1/2" DIA. THRU HOLE

PART NO: GAP-021
MATERIAL: 6061 T6 ALUMINUM
QUANTITY: 1 PIECE

GAP POWER
ART PORTER

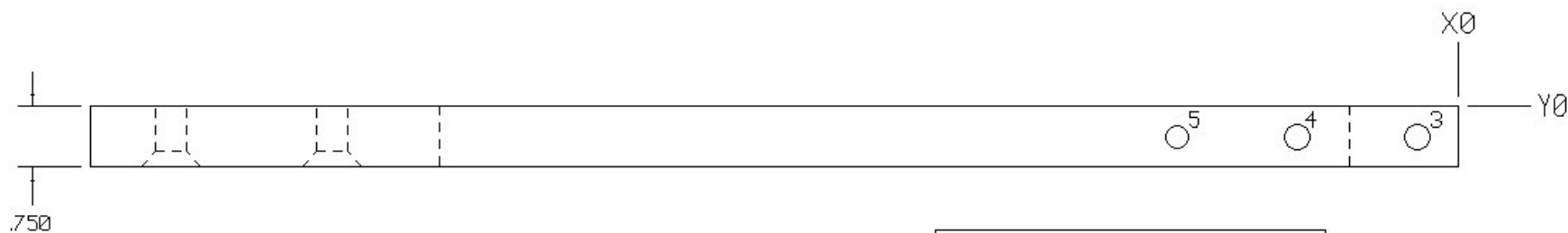
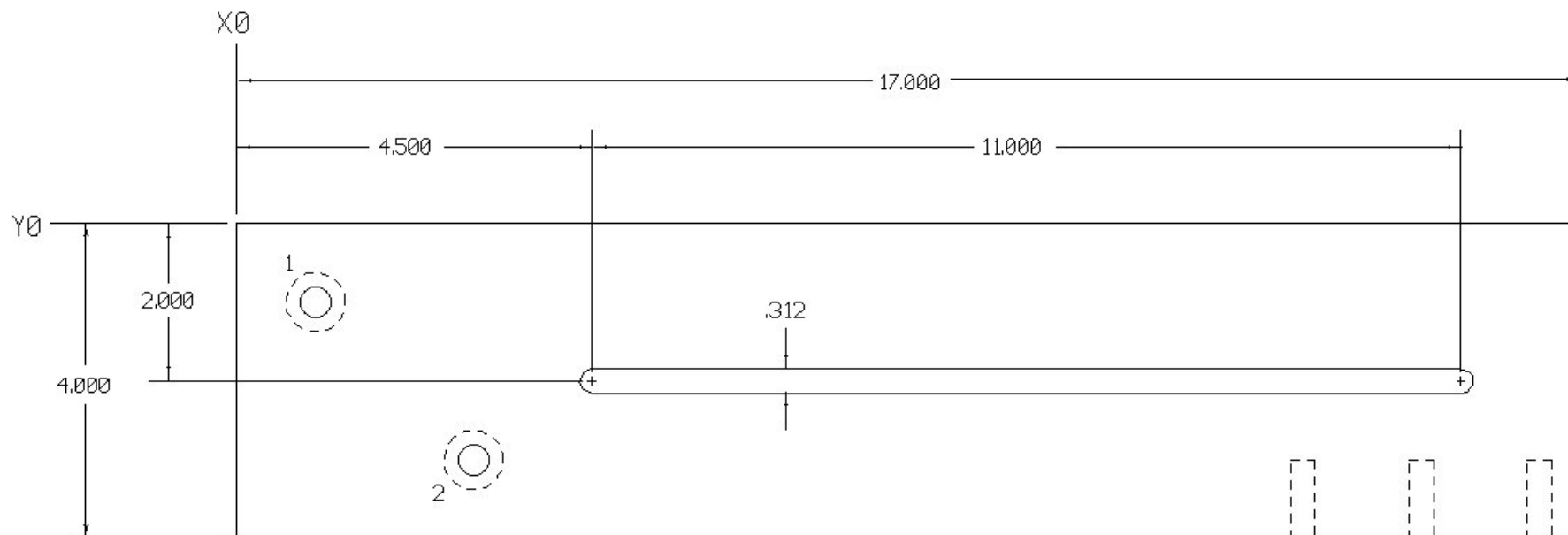




HOLE#	X	Y	DESCRIPTION
1	.500	-.500	5/16" DIA. THRU HOLE, C'BORED FROM TOP
2	8.250	-3.500	AS SHOWN FOR SOCKET HEAD CAP SCREW
3	2.537	-1.125	
4	2.537	-2.875	5/16" DIA. THRU HOLE, C'BORED FROM OTHER
5	9.412	-2.875	SIDE AS SHOWN FOR SOCKET HEAD CAP SCREW
6	9.412	-1.125	
7	.500	-.375	5/16"-18 NC TAPPED HOLE, 1/2" MIN
8	3.500	-.375	STRAIGHT THREAD DEPTH

PART NO: GAP-022
 MATERIAL: 6061 T6 ALUMINUM
 QUANTITY: 1 PIECE

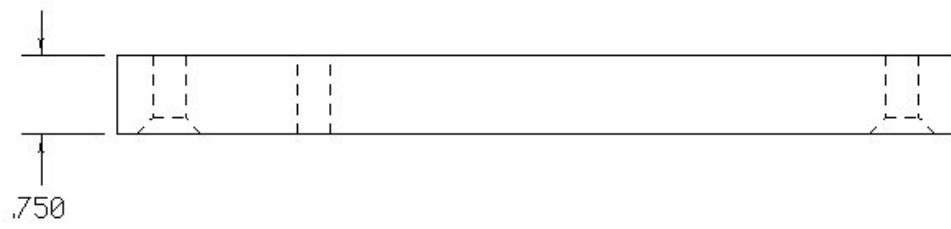
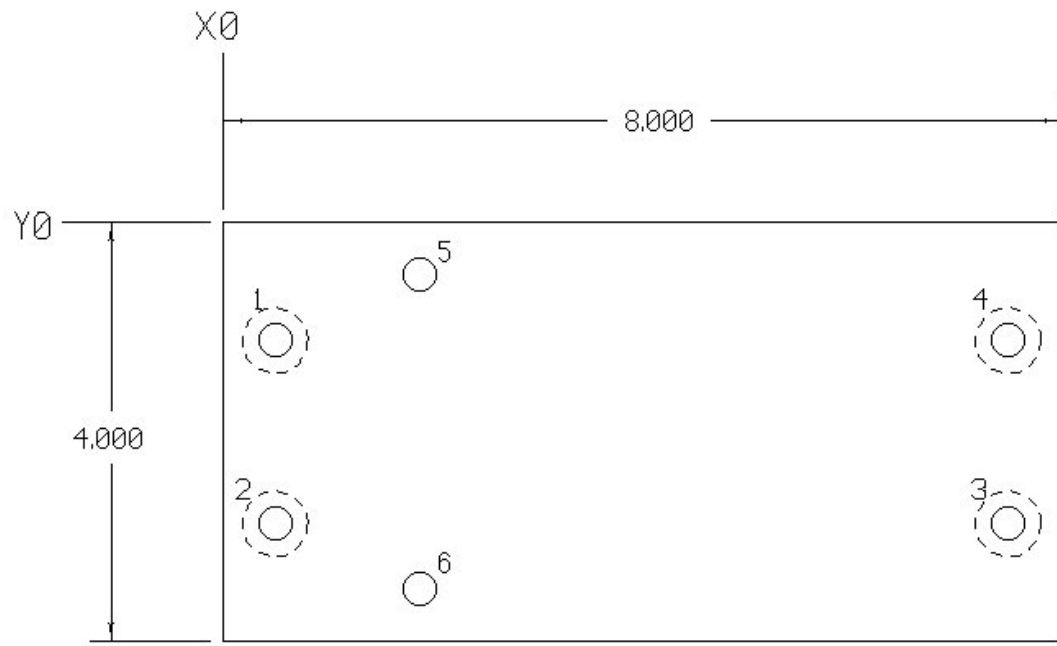
GAP POWER
 ART PORTER



HOLES	X	Y	DESCRIPTION
1	1.000	-1.000	3/8" DIA. THRU HOLE, C'SUNK FROM OTHER
2	3.000	-3.000	SIDE AS SHOWN FOR FLAT HEAD SCREW
3	-0.500	-0.375	5/16"-18 NC TAPPED HOLE, 1/2" MIN. THREAD DEPTH
4	-2.000	-0.375	
5	-3.500	-0.375	

PART NO: GAP-023
 MATERIAL: 6061 T6 ALUMINUM
 QUANTITY: 1 PIECE

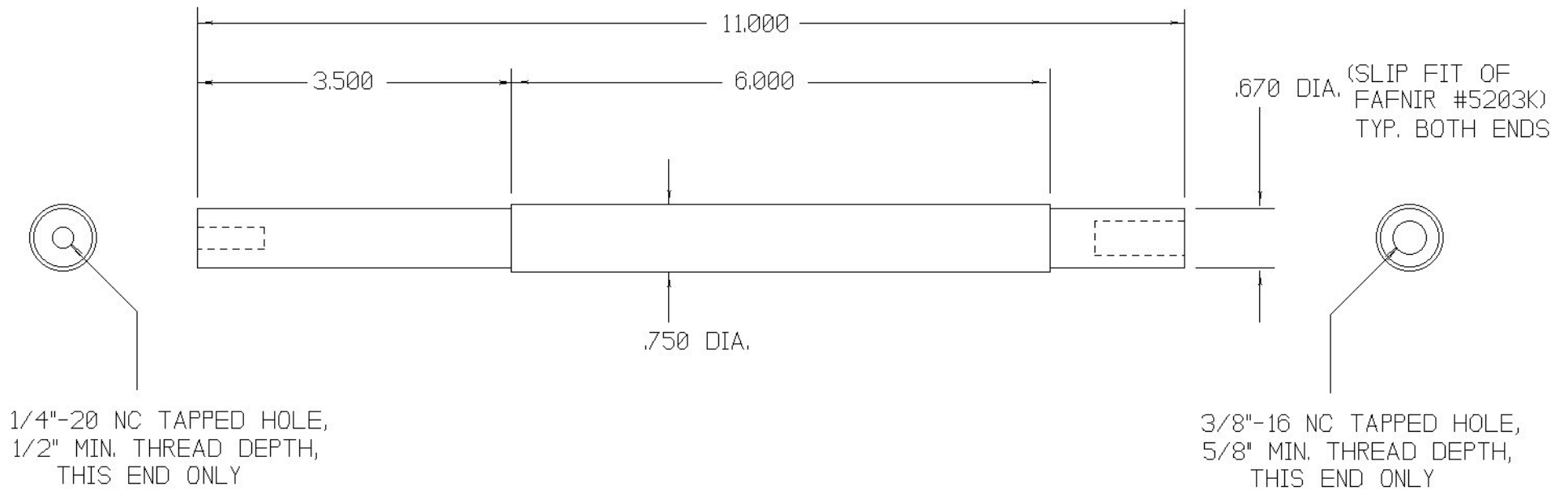
GAP POWER
 ART PORTER



HOLE	X	Y	DESCRIPTION
1	.500	-1.125	
2	.500	-2.875	5/16" DIA. THRU HOLE, C'SUNK FROM OTHER
3	7.500	-2.875	SIDE AS SHOWN FOR FLAT HEAD SCREW
4	7.500	-1.125	
5	1.875	-.500	5/16"-18 NC TAPPED HOLE THRU HOLE
6	1.875	-3.500	

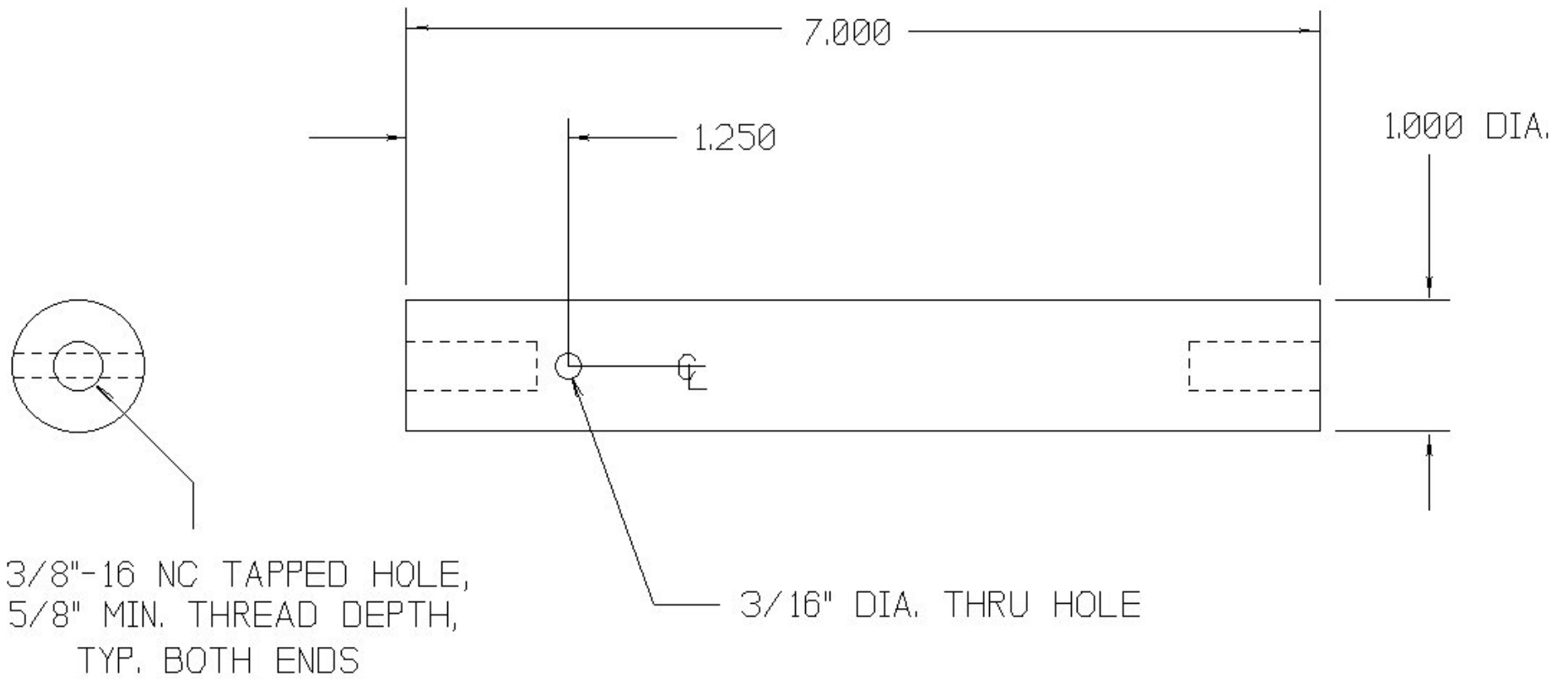
PART NO: GAP-024
 MATERIAL: 6061 T6 ALUMINUM
 QUANTITY: 1 PIECE

GAP POWER
 ART PORTER



GAP POWER
ART PORTER

PART NO: GAP-025
 QUANTITY: 1 PIECE
 MATERIAL: 3/4" DIA. 6061 T6 ALUMINUM, WITH ENDS
 POLISHED FOR SLIP FIT IN FAFNIR BEARING #5203K

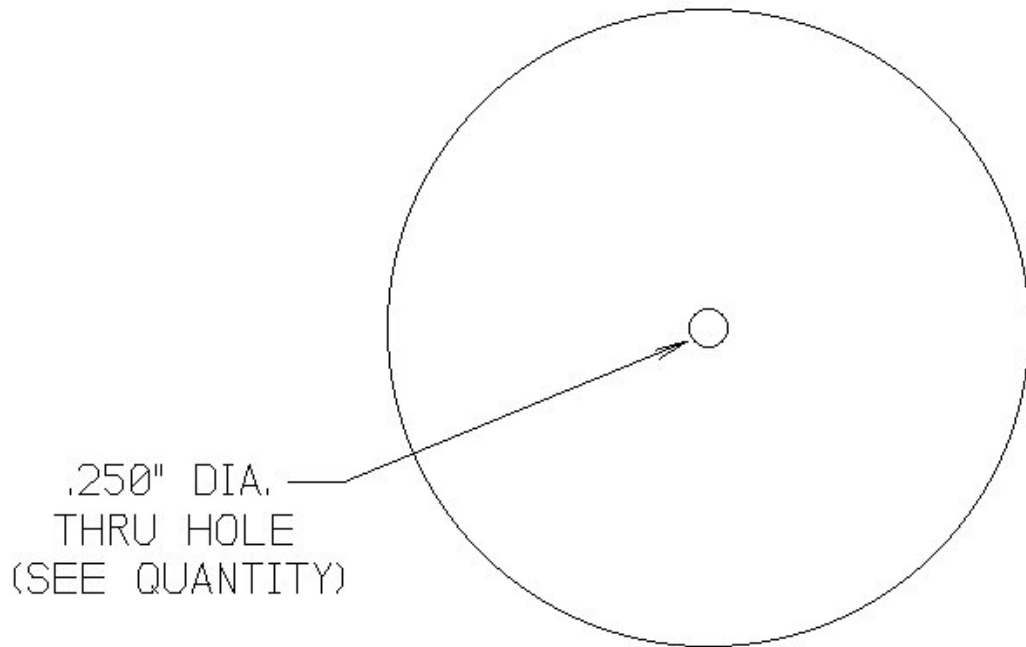
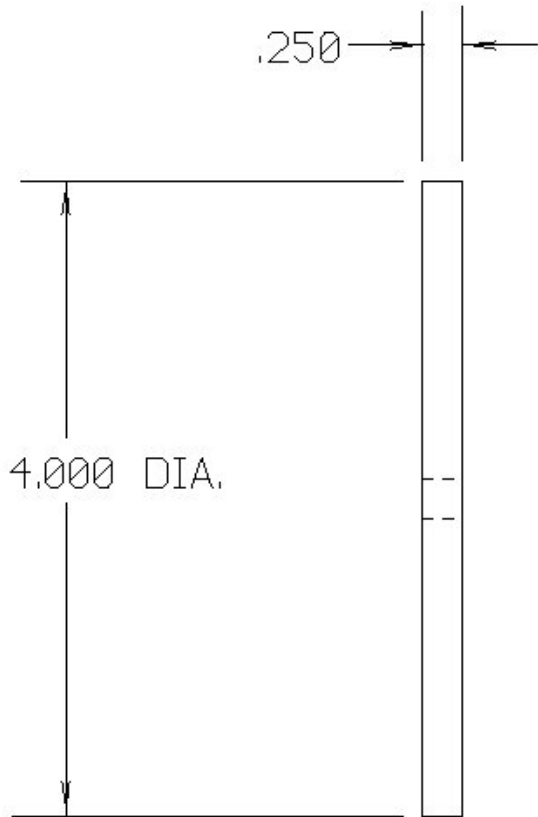


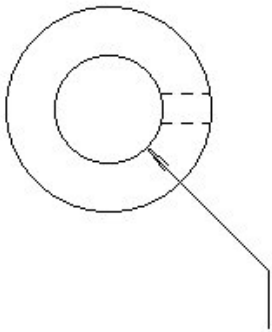
GAP POWER
ART PORTER

PART NO: GAP-026
QUANTITY: 1 PIECE
MATERIAL: 1.000" DIA. 6061 T6 ALUMINUM

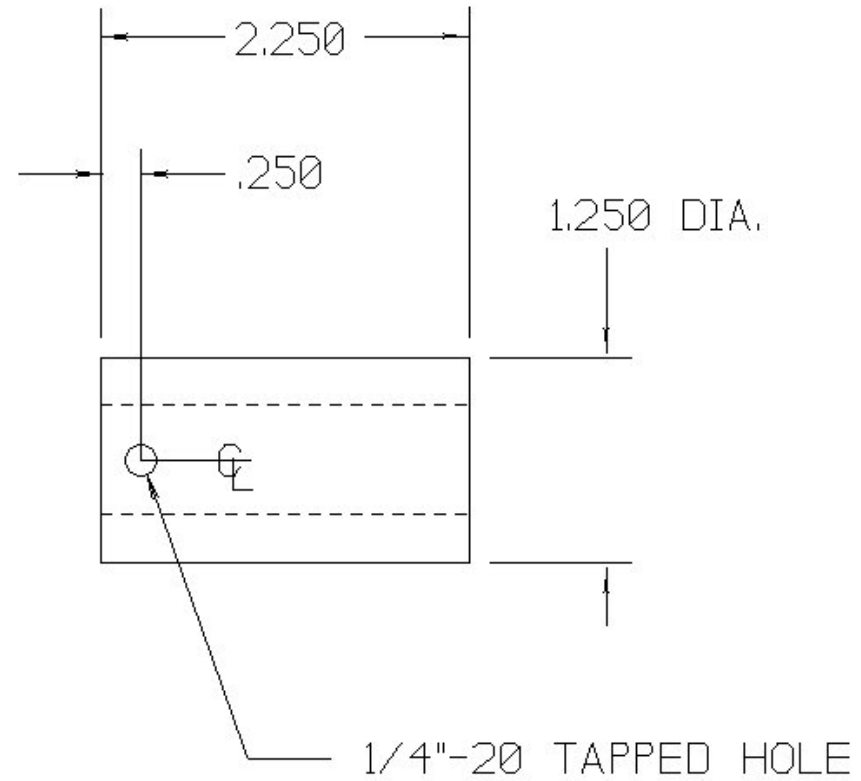
GAP POWER
ART PORTER

PART NO: GAP-027
MATERIAL: 6061 T6 ALUMINUM
QUANTITY: 3 PIECES (1 PC. AS SHOWN AND 2 PCS.
WITH A .375" DIA. THRU HOLE)



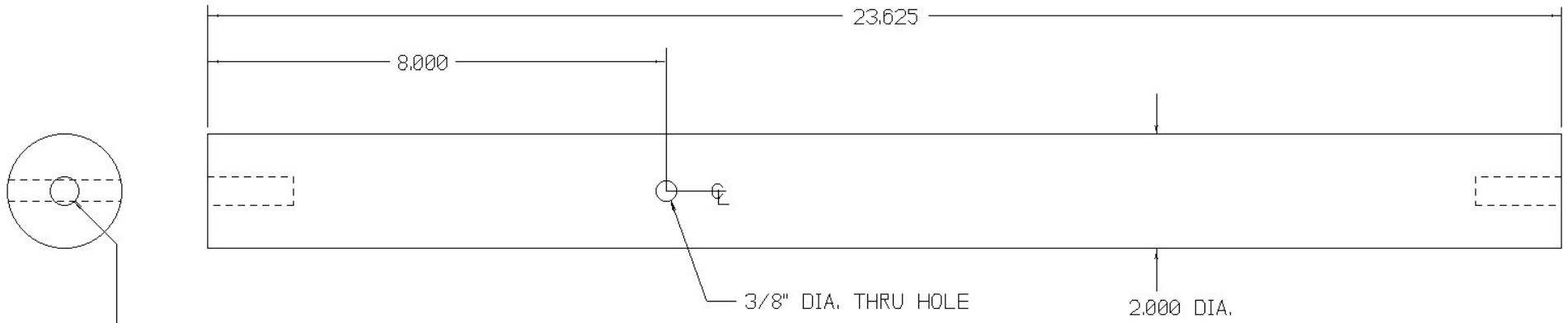


.670" DIA. THRU HOLE,
FOR SLIP FIT ON END
OF P/N GAP-025



GAP POWER
ART PORTER

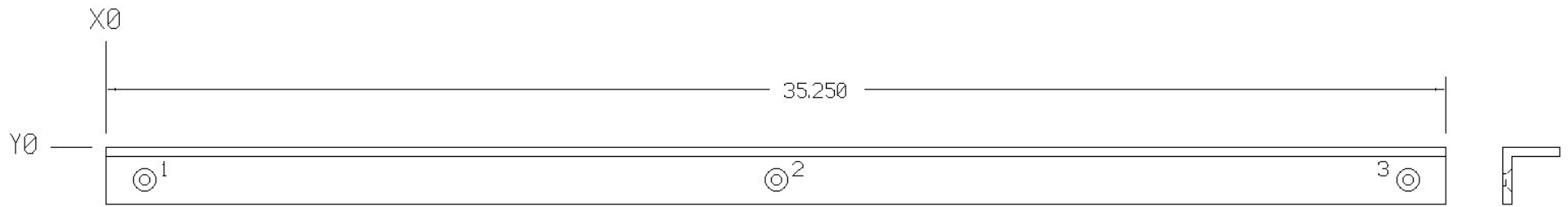
PART NO: GAP-028
QUANTITY: 1 PIECE
MATERIAL: 1.250" DIA. 6061 T6 ALUMINUM



1/2"-13 NC TAPPED HOLE,
1.250" MIN. THREAD DEPTH,
TYP. BOTH ENDS

GAP POWER
ART PORTER

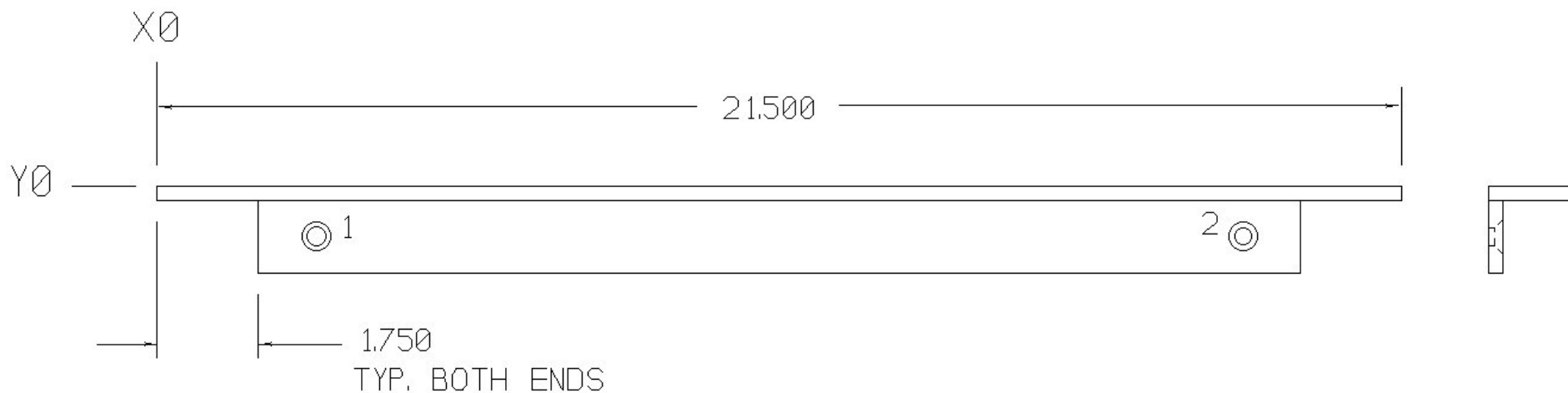
PART NO: GAP-029
QUANTITY: 4 PIECES
MATERIAL: 2.000" DIA. 6061 T6 ALUMINUM



<u>POINTS</u>	<u>X</u>	<u>Y</u>	
1	1.000	-875	5/16" DIA. THRU HOLE, C'SUNK AS SHOWN FOR FLAT HEAD SCREW
2	17.625	-875	
3	34.250	-875	

PART NO: GAP-030
 MATERIAL: 1/4" X 1 1/2" ALUMINUM ANGLE
 QUANTITY: 2 PIECES

GAP POWER
 ART PORTER

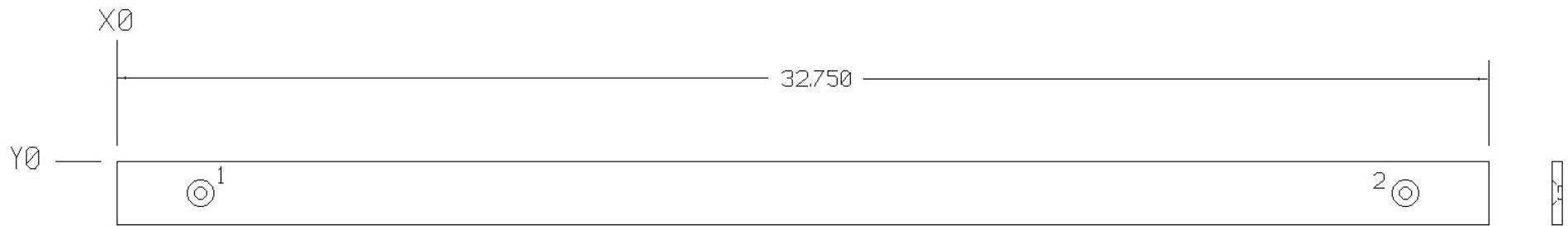


<u>POINTS</u>	<u>X</u>	<u>Y</u>
1	2.750	-.875
2	18.750	-.875

5/16" DIA. THRU HOLE, C'SUNK AS SHOWN FOR FLAT HEAD SCREW

PART NO: GAP-031
 MATERIAL: 1/4" X 1 1/2" ALUMINUM ANGLE
 QUANTITY: 2 PIECES

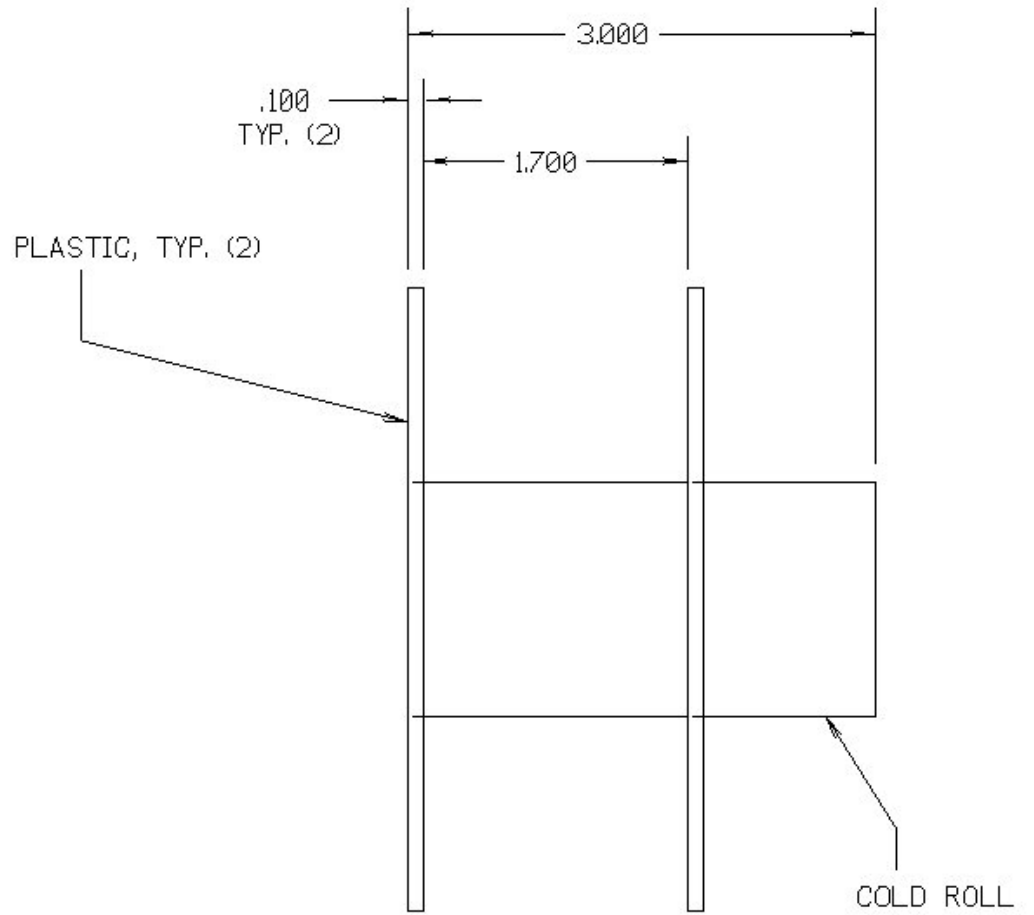
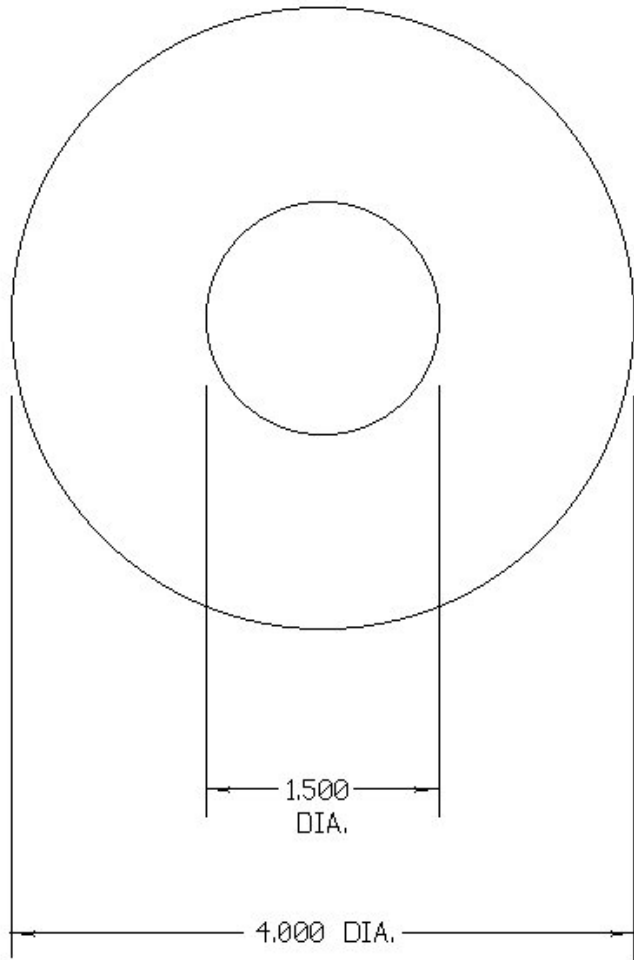
GAP POWER
 ART PORTER



<u>POINTS</u>	<u>X</u>	<u>Y</u>	
1	2.000	-0.750	5/16" DIA. THRU HOLE, C'SUNK AS SHOWN FOR FLAT HEAD SCREW
2	30.750	-0.750	

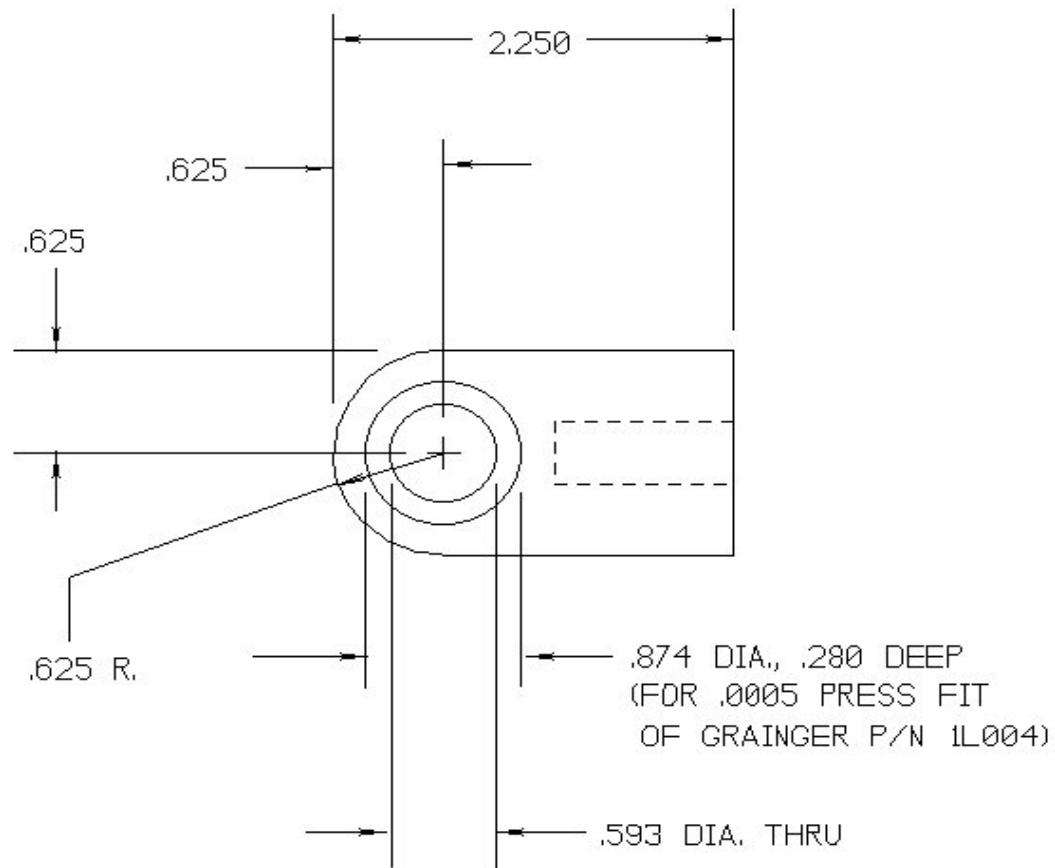
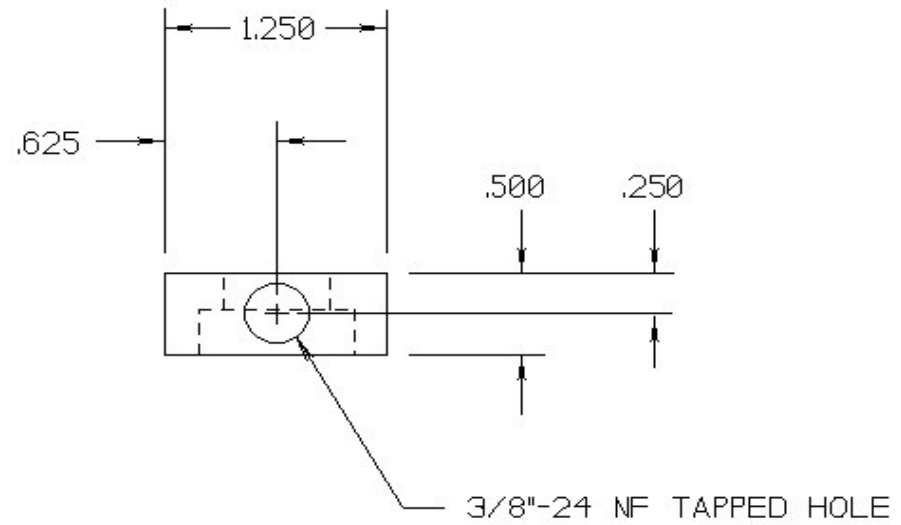
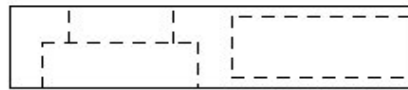
PART NO: GAP-032
 MATERIAL: 1/4" X 1 1/2" ALUMINUM FLAT
 QUANTITY: 2 PIECES

GAP POWER
 ART PORTER



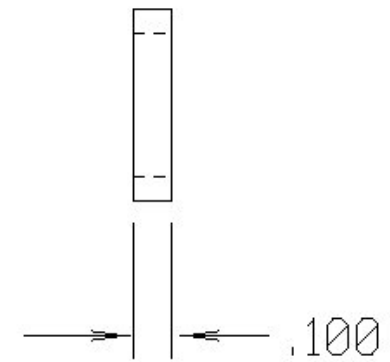
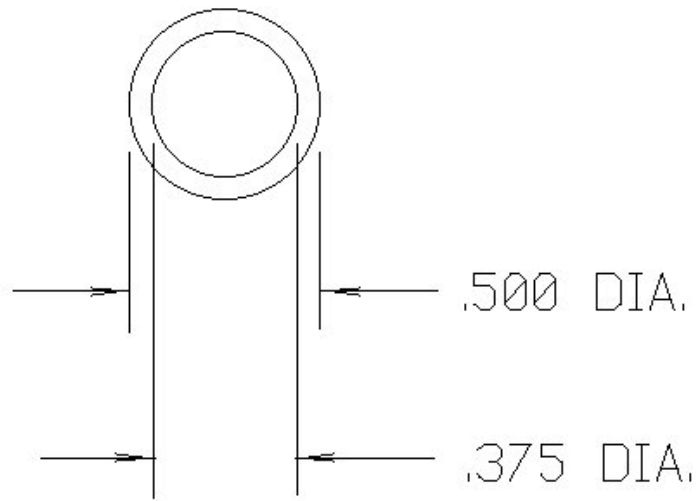
PART NO: GAP-033
 MATERIAL: AS SHOWN
 QUANTITY: 1 PIECE

GAP POWER
 ART PORTER



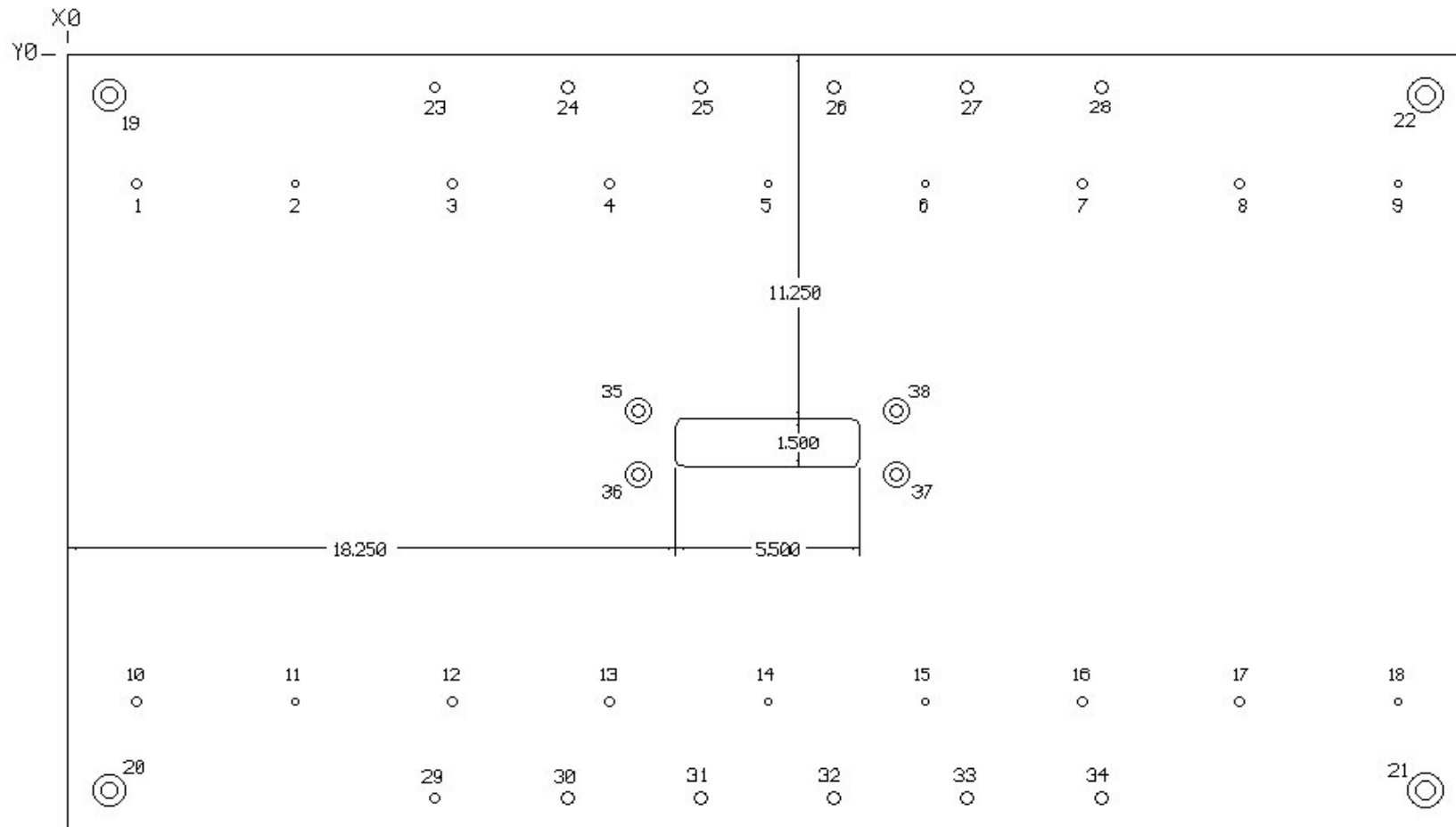
PART NO: GAP-034
MATERIAL: 6061 T6 ALUMINUM
QUANTITY: 2 PIECES

GAP POWER
ART PORTER



PART NO: GAP-035
MATERIAL: ALUMINUM-BRONZE WEARITE
QUANTITY: 2 PIECES

GAP POWER
ART PORTER



POINTS	X	Y
1	2.102	-4.000
2	6.826	-4.000
3	11.550	-4.000
4	16.274	-4.000
5	20.998	-4.000
6	25.722	-4.000
7	30.446	-4.000
8	35.170	-4.000
9	39.894	-4.000
10	2.102	-20.000
11	6.826	-20.000
12	11.550	-20.000
13	16.274	-20.000
14	20.998	-20.000
15	25.722	-20.000
16	30.446	-20.000
17	35.170	-20.000
18	39.894	-20.000

1/4"-20 NC TAPPED THRU HOLE

PART NO. GAP-036
 MATERIAL: 24" X 42" X 1/2"
 THICK 6061 T6
 ALUMINUM PLATE
 QUANTITY: 1 PIECE

GAP POWER
 ART PORTER

POINTS	X	Y
19	1.250	-1.250
20	1.250	-22.750
21	40.750	-22.750
22	40.750	-1.250
23	11.000	-1.000
24	15.000	-1.000
25	19.000	-1.000
26	23.000	-1.000
27	27.000	-1.000
28	31.000	-1.000
29	11.000	-23.000
30	15.000	-23.000
31	19.000	-23.000
32	23.000	-23.000
33	27.000	-23.000
34	31.000	-23.000

3/8"-16 NC TAPPED THRU HOLE

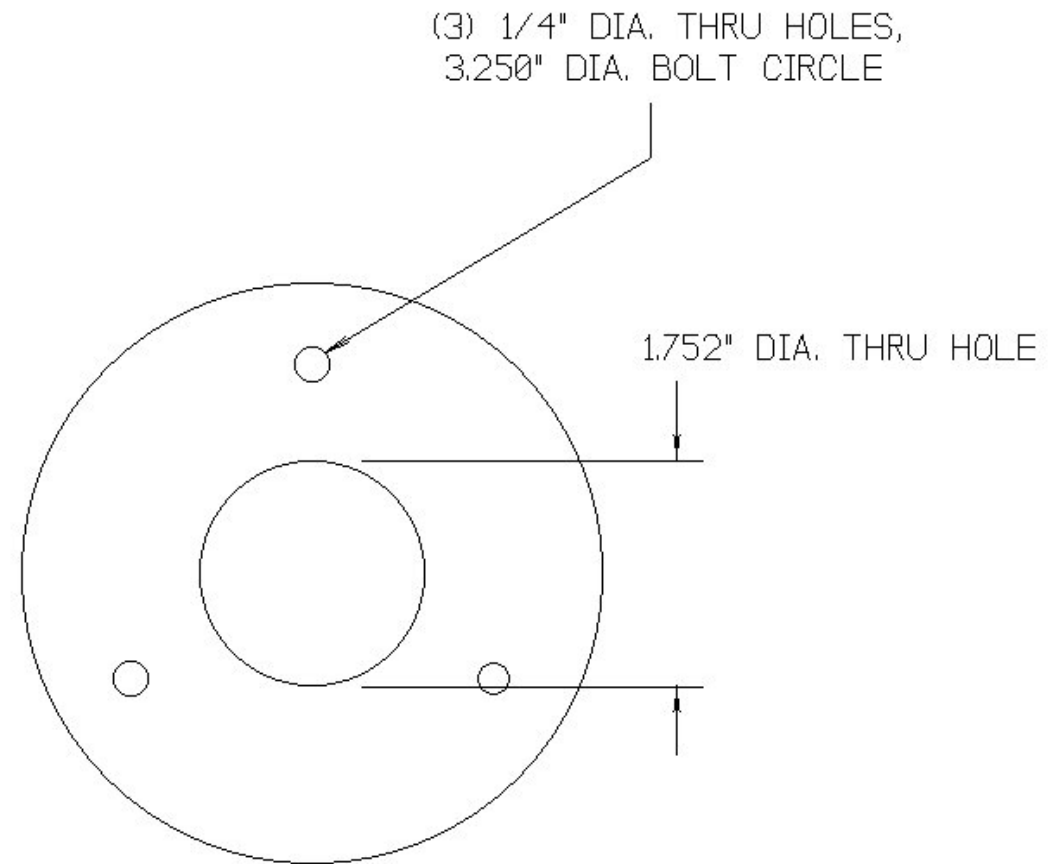
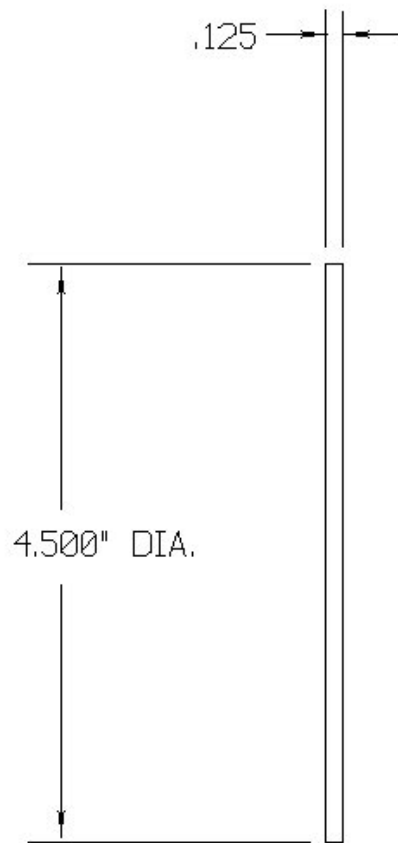
1/2" DIA. THRU HOLE, C'SUNK
 FROM TOP SIDE AS SHOWN
 FOR FLAT HEAD CAP SCREW

POINTS	X	Y
35	17.125	-11.000
36	17.125	-13.000
37	24.875	-13.000
38	24.875	-11.000

3/8" DIA. THRU HOLE, C'SUNK
 FROM TOP SIDE AS SHOWN
 FOR FLAT HEAD CAP SCREW

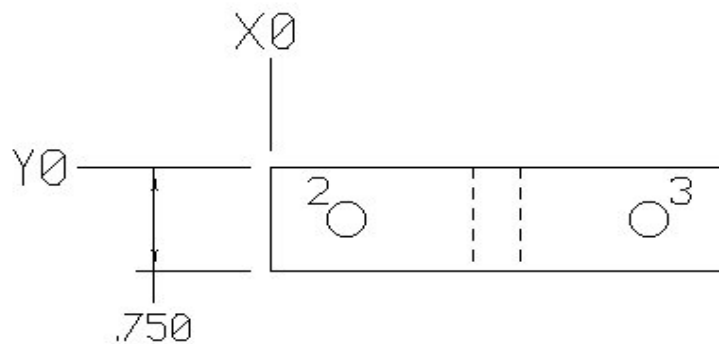
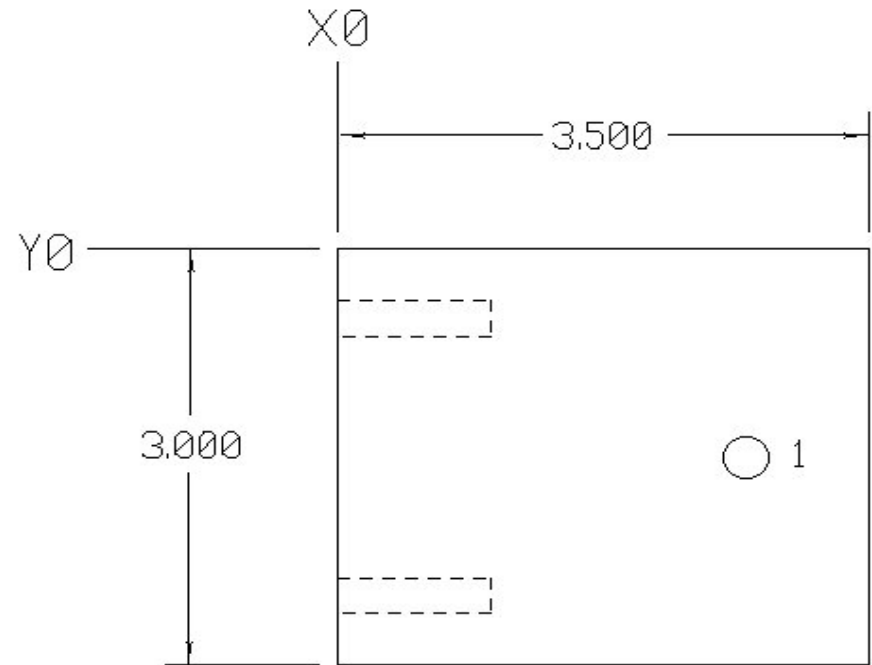
PART NO: GAP-037
MATERIAL: CPVC PLASTIC
QUANTITY: 1 PIECE

GAP POWER
ART PORTER



PART NO: GAP-038
 MATERIAL: 6061 T6 ALUMINUM
 QUANTITY: 2 PIECES

GAP POWER
 ART PORTER



HOLE	X	Y	DESCRIPTION
1	2.687	-1.500	5/16"-18 NC TAPPED THRU HOLE
2	.500	-.375	1/4"-20 NC TAPPED HOLE, 1/2"
3	2.500	-.375	MIN. STRAIGHT THREAD DEPTH